

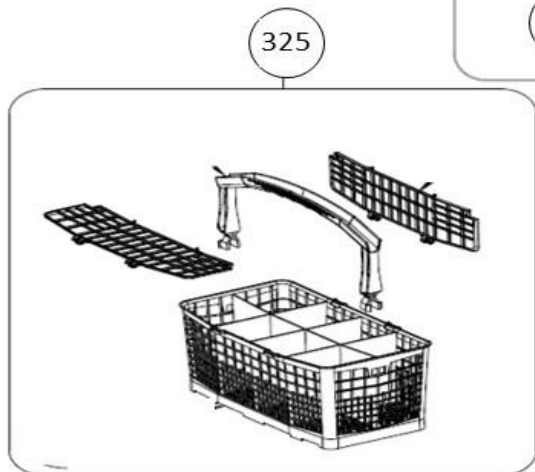
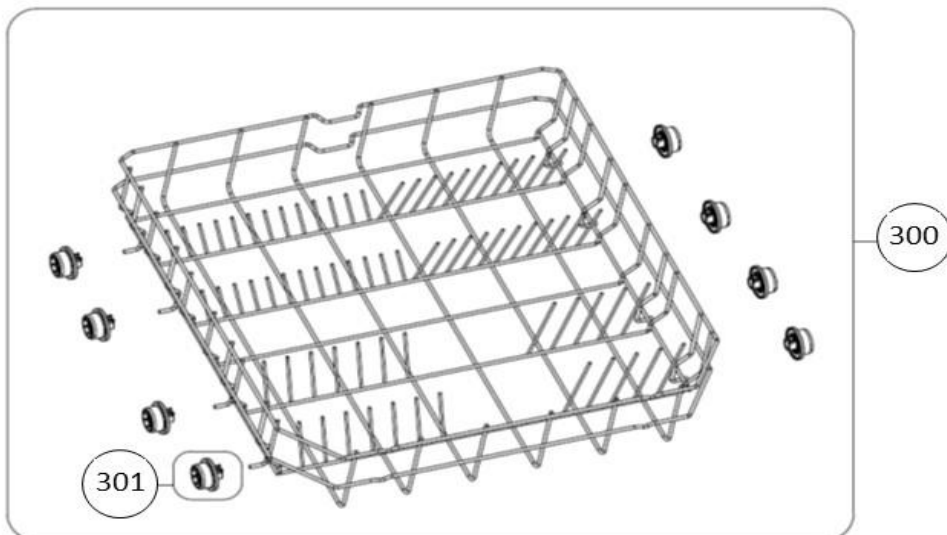
vaatwassers - vrijstaand

Typenummer

VVW7020 - 01

Subgroep onderdeel

Servieslade beneden



Revisie datum

5-11-2018

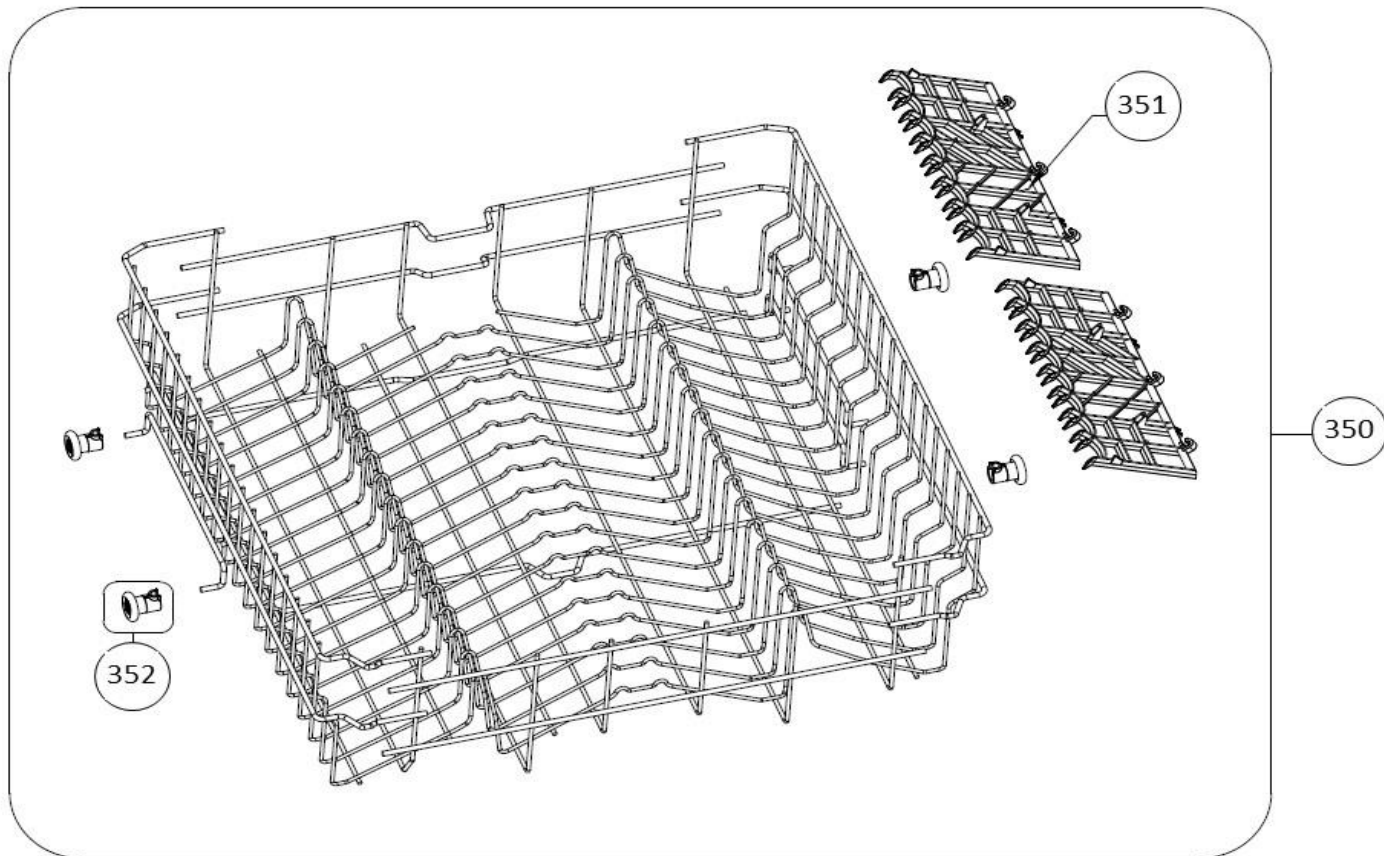
vaatwassers - vrijstaand

Typenummer

VVW7020 - 01

Subgroep onderdeel

Servieslade boven



Revisie datum

5-11-2018

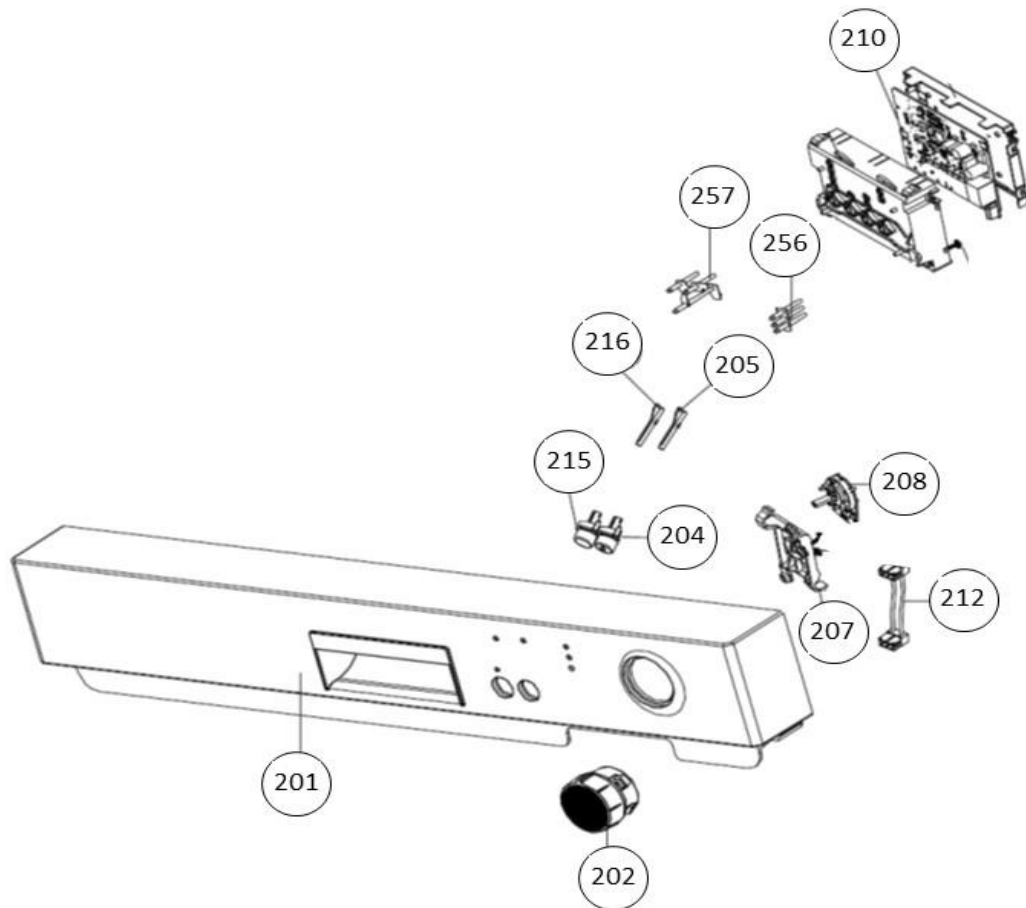
vaatwassers - vrijstaand

Typenummer

VVW7020 - 01

Subgroep onderdeel

Bedieningspaneel



Revisie datum

5-11-2018

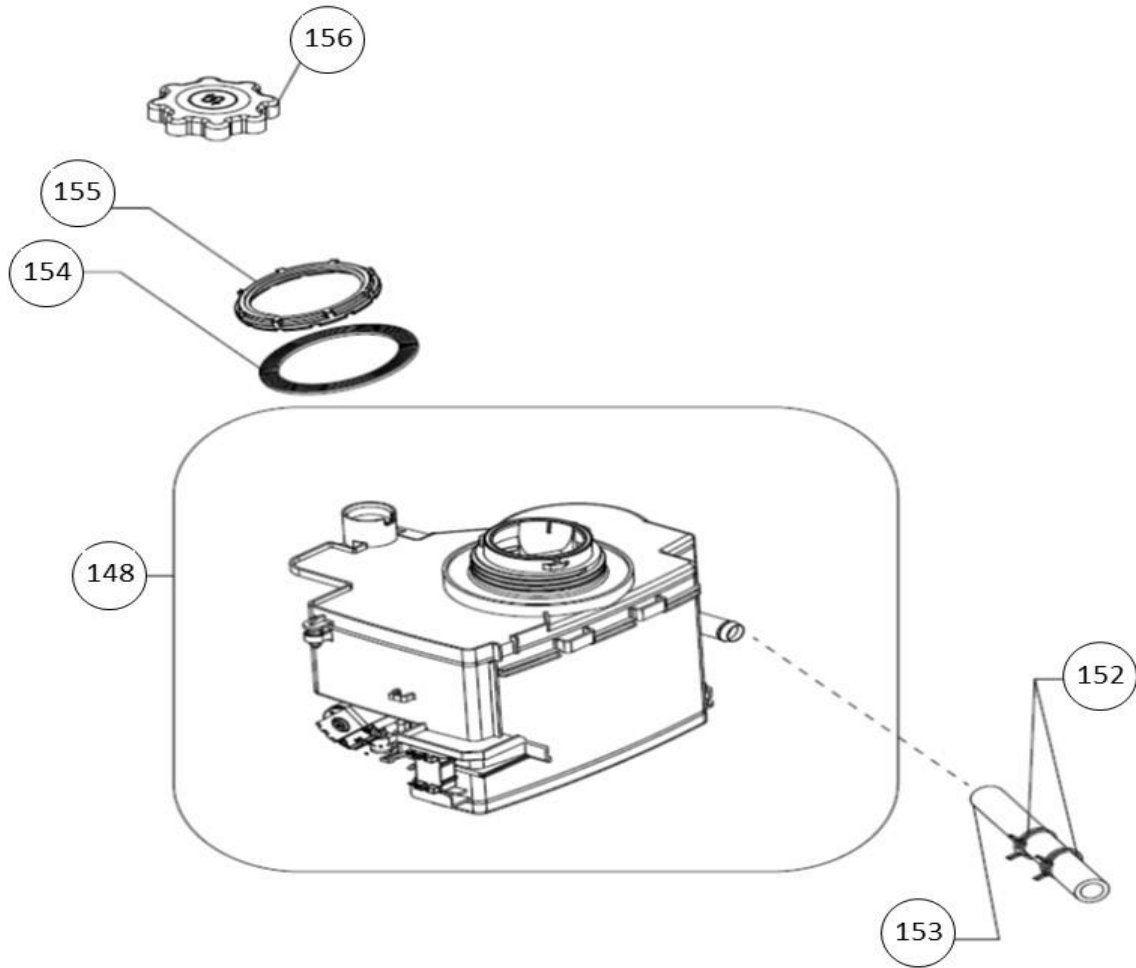
vaatwassers - vrijstaand

Typenummer

VVW7020 - 01

Subgroep onderdeel

Waterontharder



Revisie datum

5-11-2018

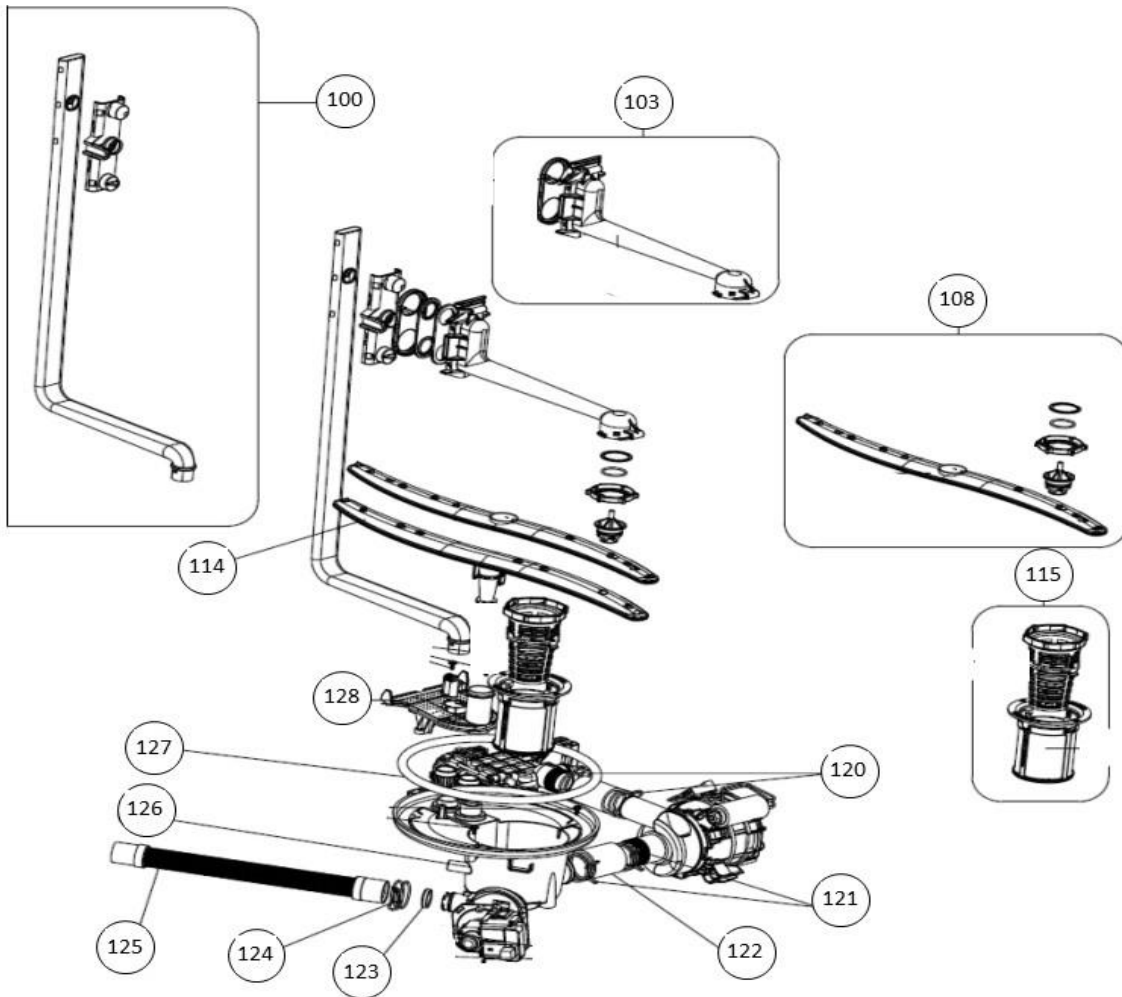
vaatwassers - vrijstaand

Typenummer

VVW7020 - 01

Subgroep onderdeel

Hydraulische groep boven



Revisie datum

5-11-2018

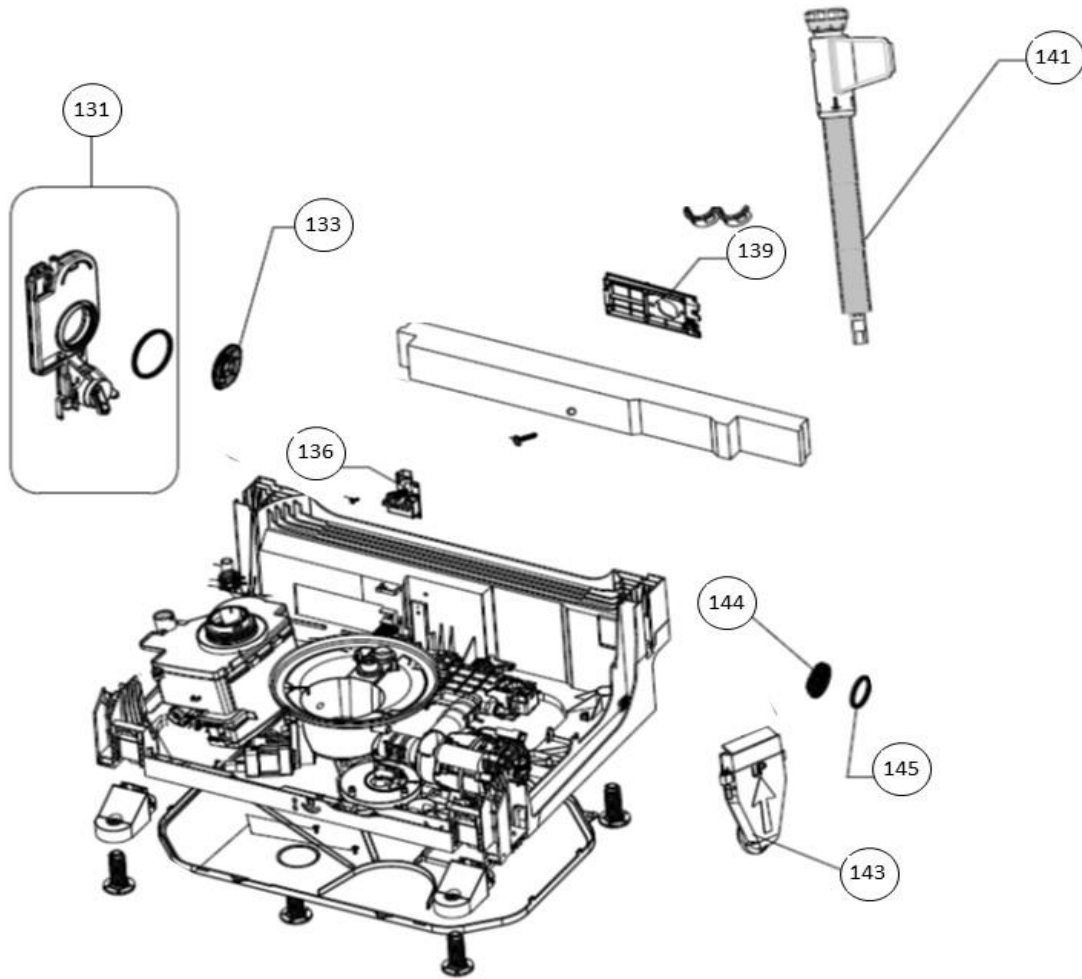
vaatwassers - vrijstaand

Typenummer

VVW7020 - 01

Subgroep onderdeel

Hydraulische groep beneden



Revisie datum

5-11-2018

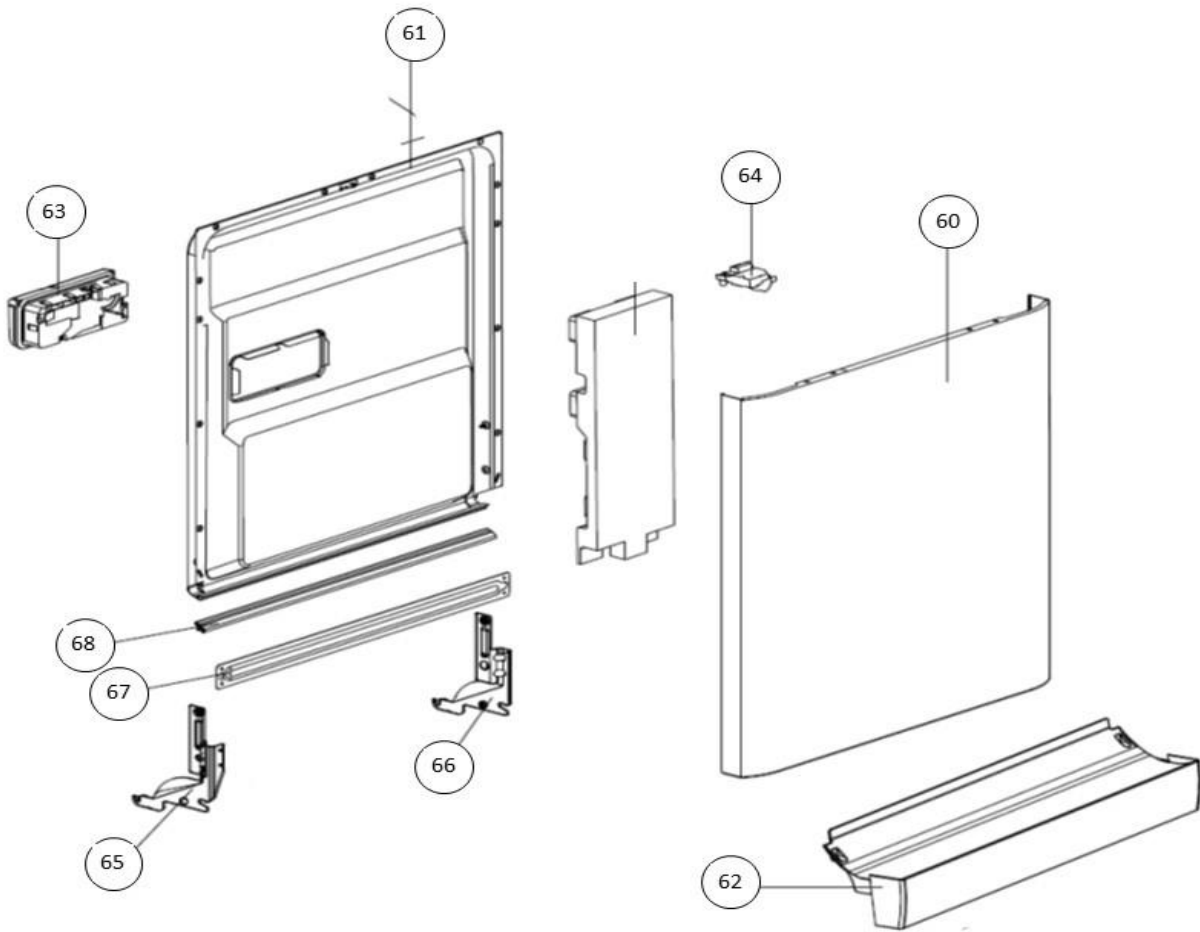
vaatwassers - vrijstaand

Typenummer

VVW7020 - 01

Subgroep onderdeel

Deur



Revisie datum

5-11-2018

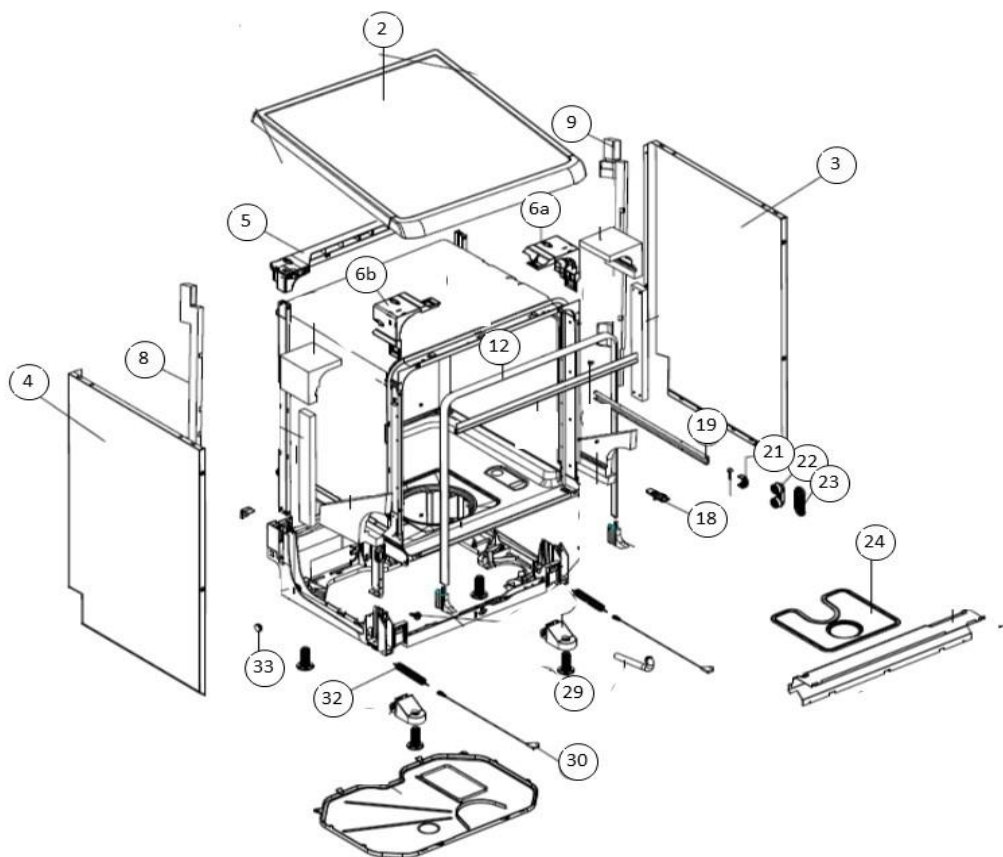
vaatwassers - vrijstaand

Typenummer

VVW7020 - 01

Subgroep onderdeel

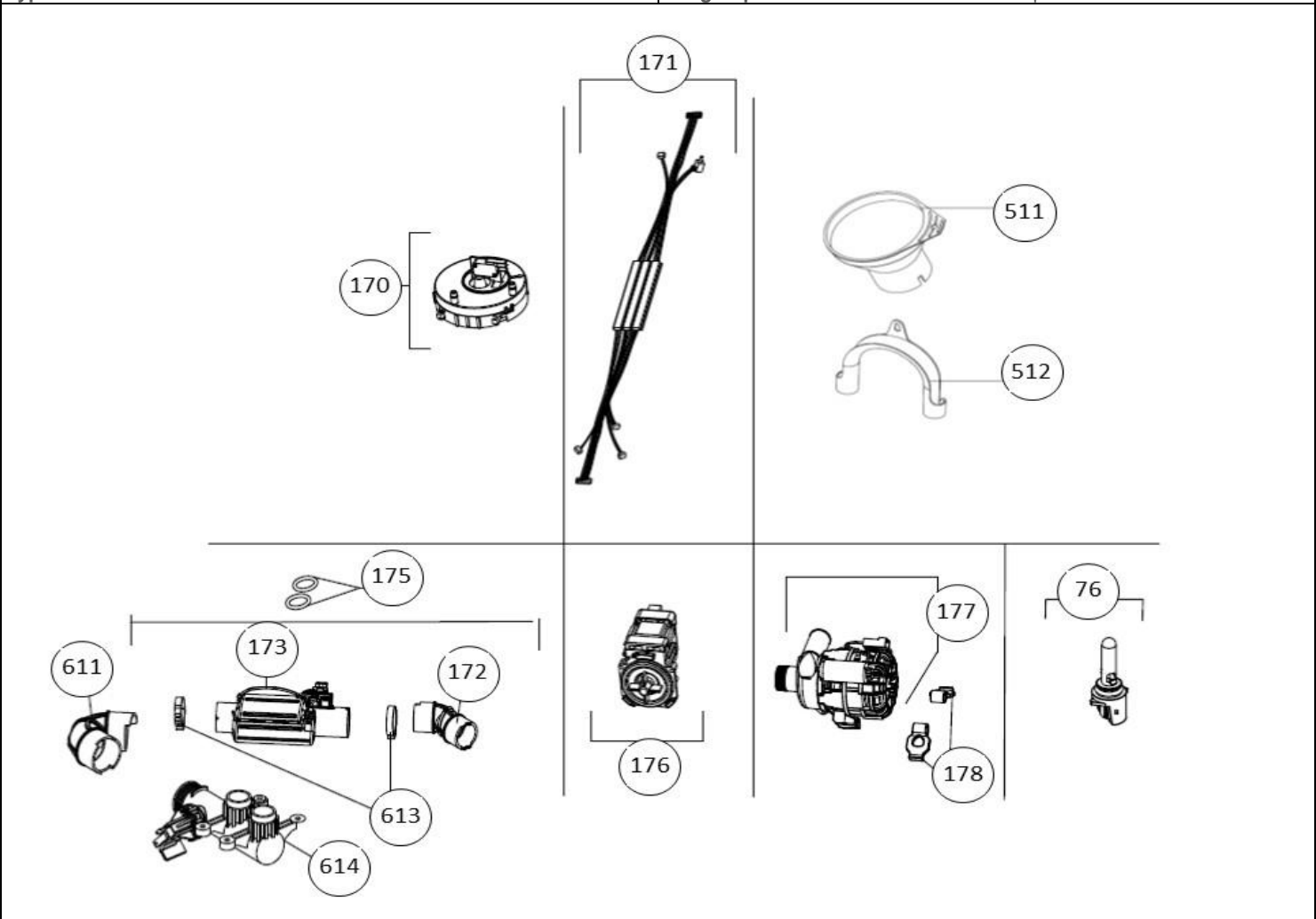
Behuizing



Revisie datum

5-11-2018

vaatwassers - vrijstaand

Typenummer	VWV7020 - 01	Subgroep onderdeel	Componenten
 <p>The diagram shows an exploded view of a freestanding dishwasher. The parts are numbered as follows:</p> <ul style="list-style-type: none">170: A circular base or filter assembly.171: A long, thin, multi-armed spray arm.511: A circular upper cutlery tray.512: A curved lower cutlery tray.175: A pair of scissors, likely for cutting a seal or gasket.611: A circular component, possibly a door seal or gasket.173: A central motor or pump assembly.172: A cylindrical component, possibly a filter or part of the pump.613: A complex assembly of gears and shafts, likely the drive mechanism.614: A smaller component, possibly a bearing or part of the drive mechanism.176: A cylindrical component, possibly a filter or part of the pump.177: A complex assembly of gears and shafts, likely the drive mechanism.178: A small component, possibly a bearing or part of the drive mechanism.76: A small cylindrical component, possibly a filter or part of the pump.			
Revisie datum		5-11-2018	