

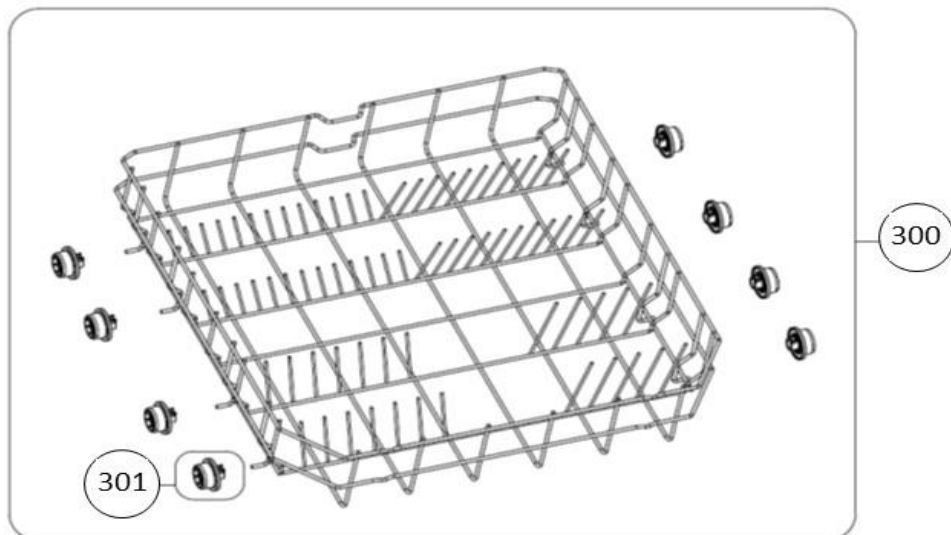
vaatwassers - vrijstaand

Typenummer

VVW6023AW - 02

Subgroep onderdeel

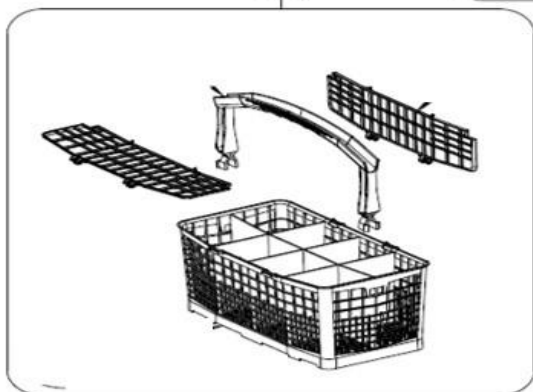
Servieslade beneden



325

301

300



Revisie datum

2-11-2018

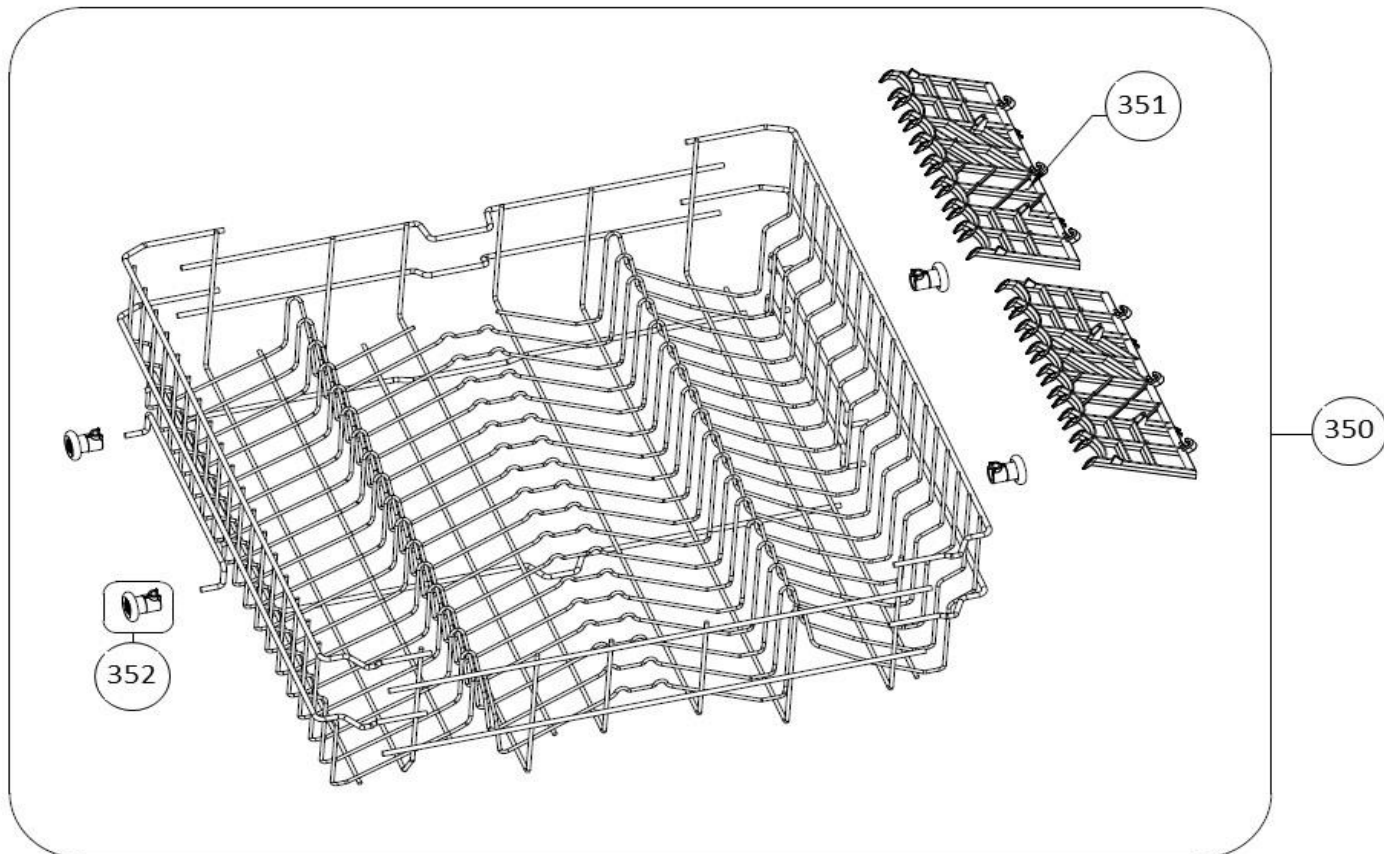
vaatwassers - vrijstaand

Typenummer

VVW6023AW - 02

Subgroep onderdeel

Servieslade boven



Revisie datum

2-11-2018

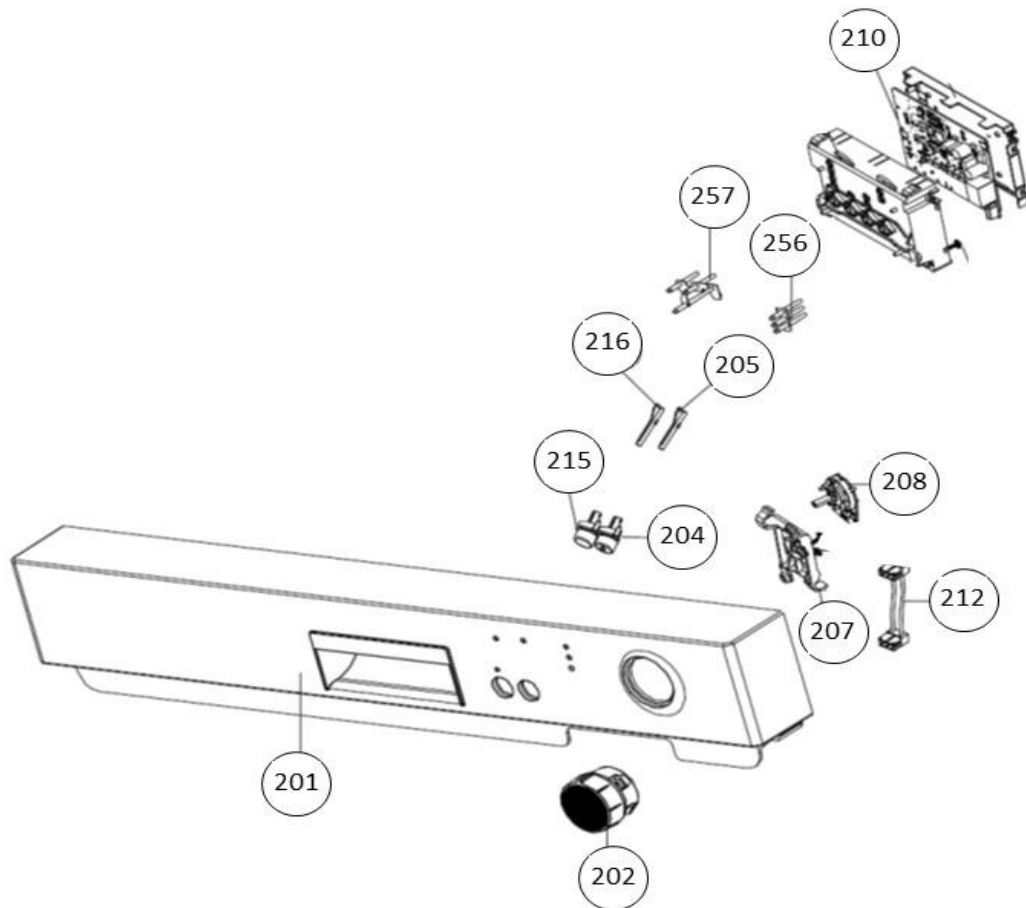
vaatwassers - vrijstaand

Typenummer

VVW6023AW - 02

Subgroep onderdeel

Bedieningspaneel



Revisie datum

2-11-2018

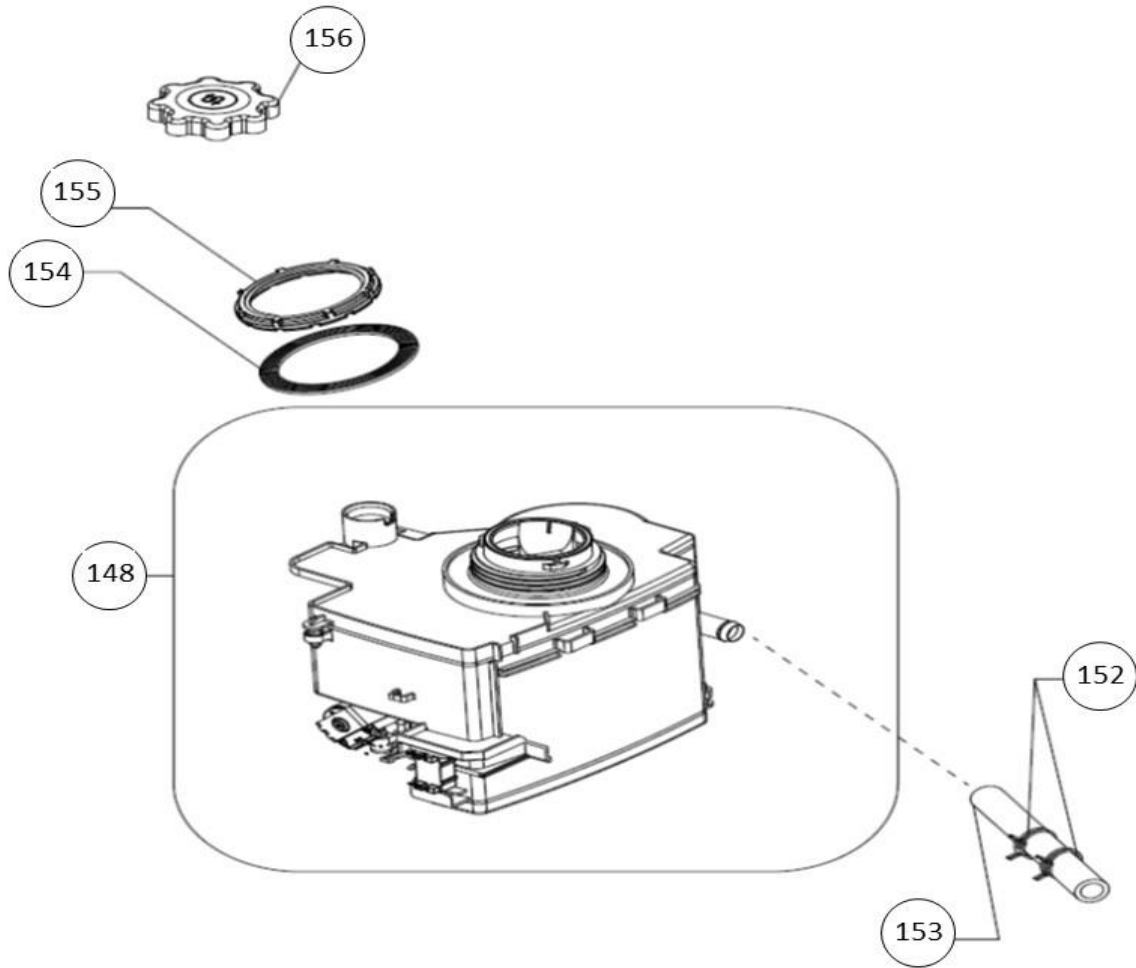
vaatwassers - vrijstaand

Typenummer

VVW6023AW - 02

Subgroep onderdeel

Waterontharder



Revisie datum

2-11-2018

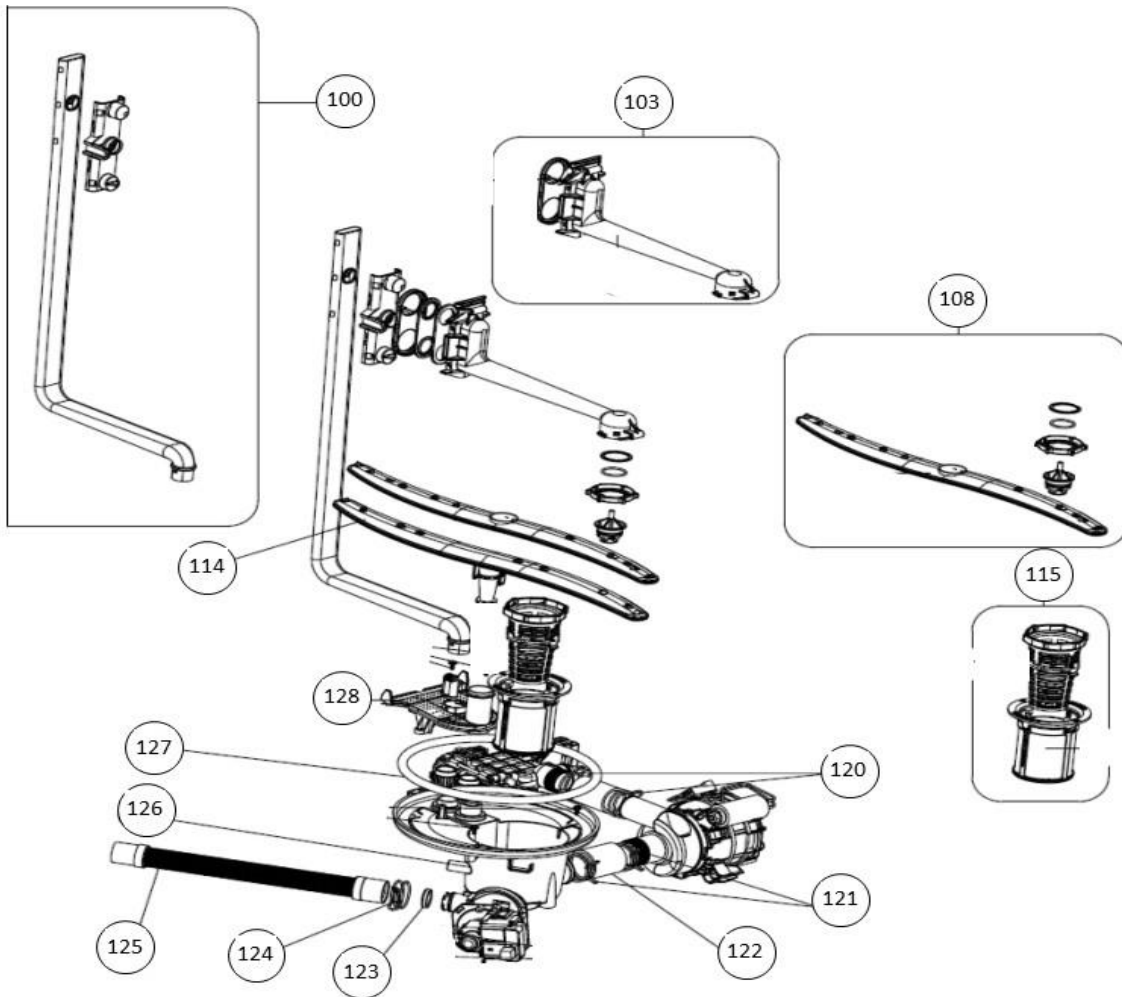
vaatwassers - vrijstaand

Typenummer

VVW6023AW - 02

Subgroep onderdeel

Hydraulische groep boven



Revisie datum

2-11-2018

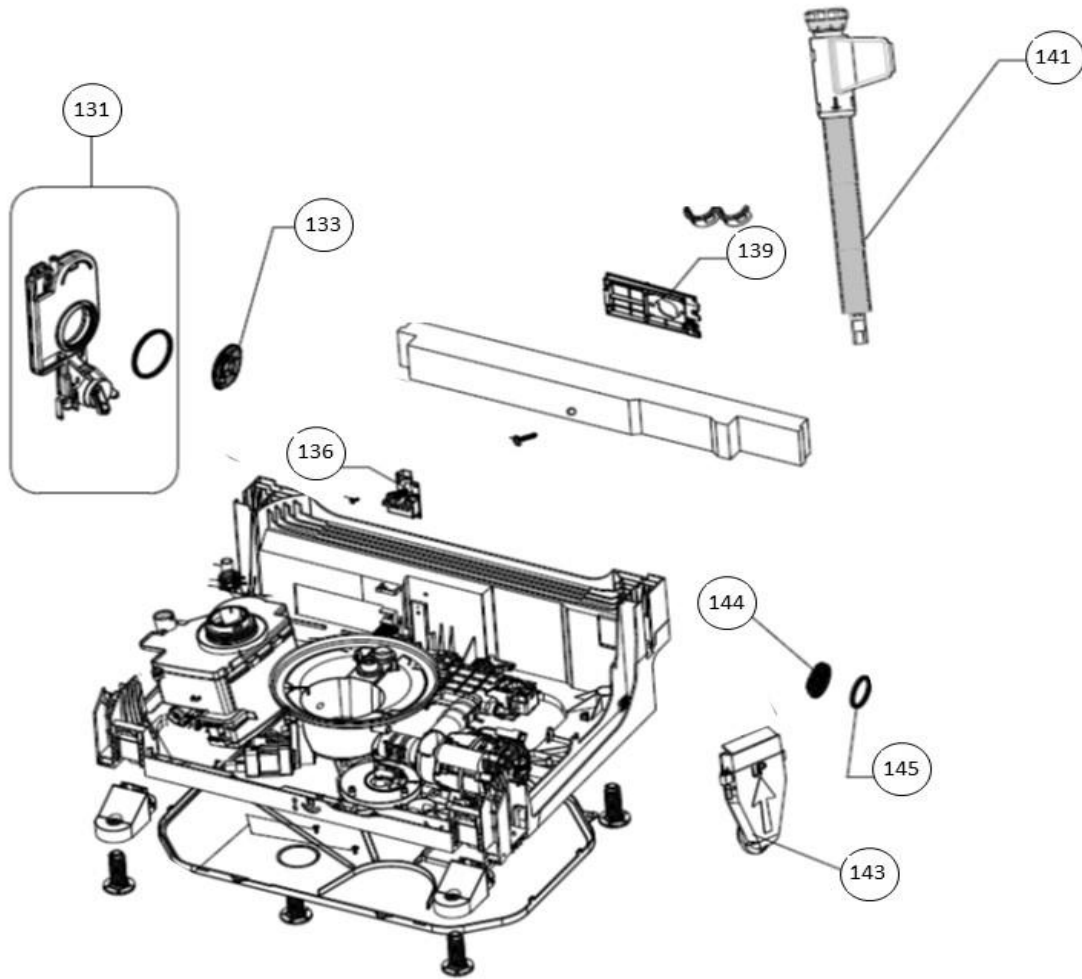
vaatwassers - vrijstaand

Typenummer

VVW6023AW - 02

Subgroep onderdeel

Hydraulische groep beneden



Revisie datum

2-11-2018

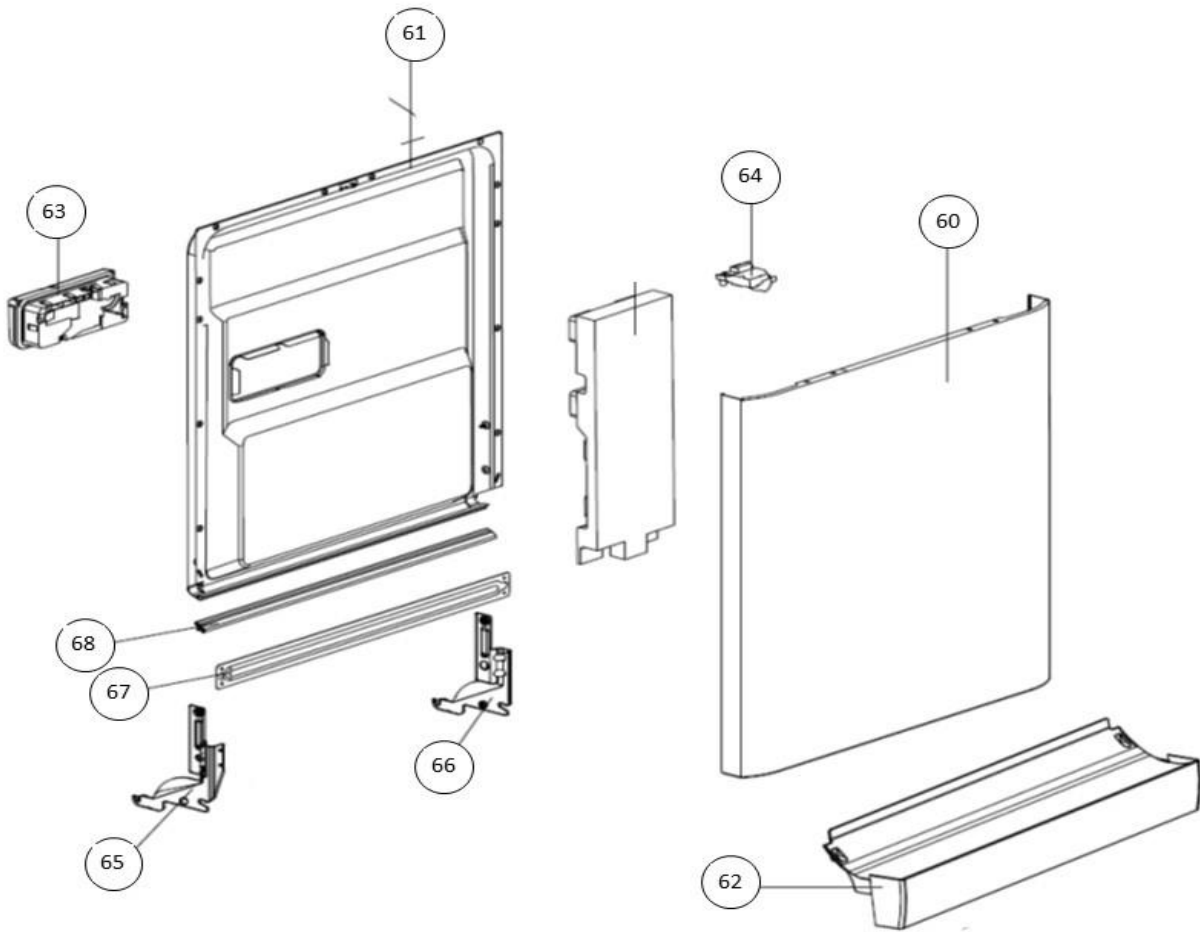
vaatwassers - vrijstaand

Typenummer

VVW6023AW - 02

Subgroep onderdeel

Deur



Revisie datum

2-11-2018

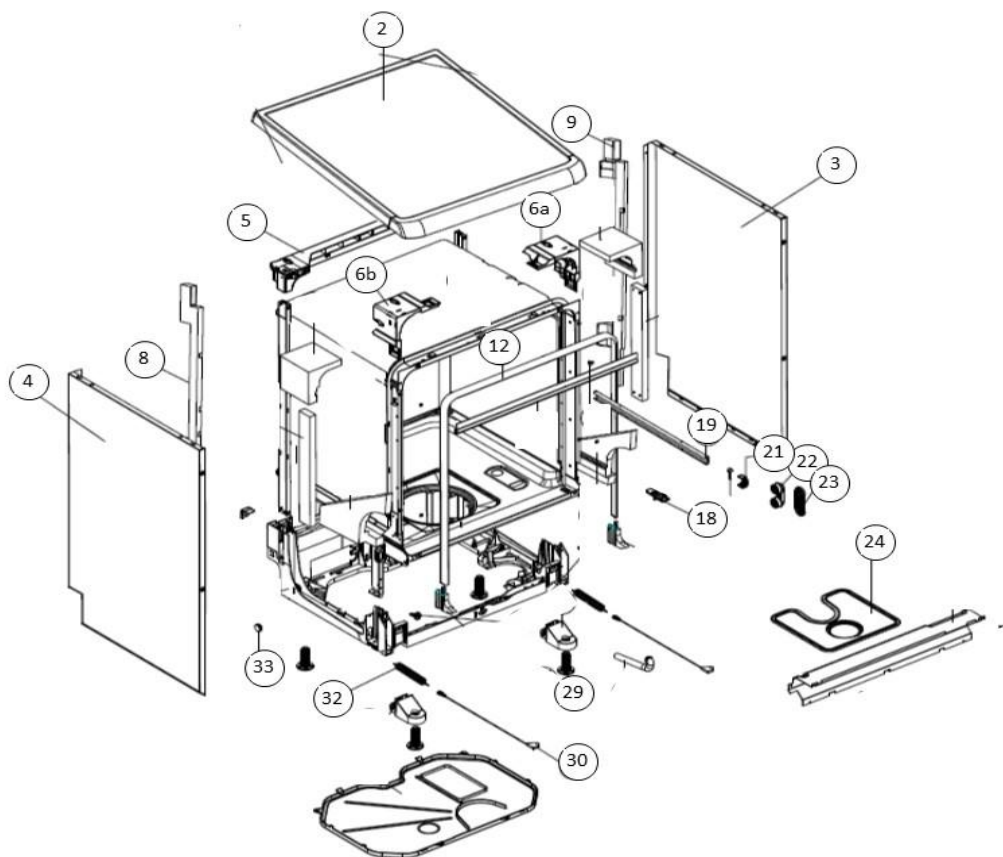
vaatwassers - vrijstaand

Typenummer

VVW6023AW - 02

Subgroep onderdeel

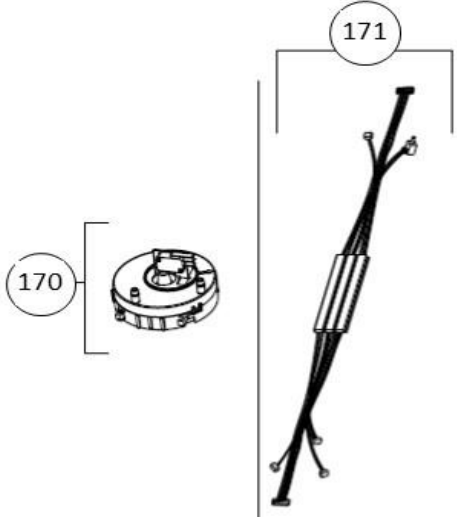
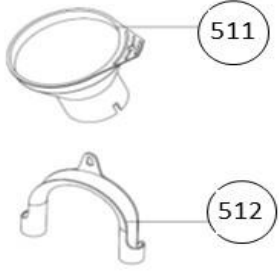
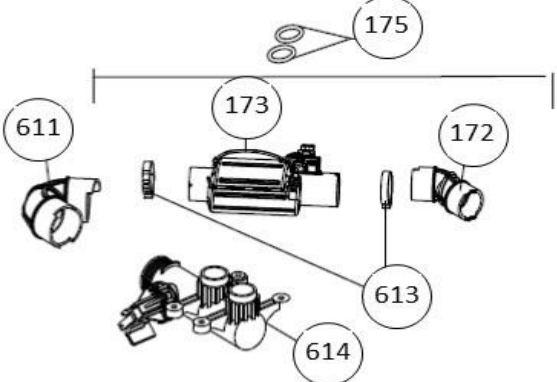
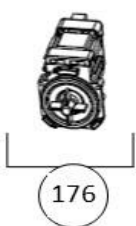
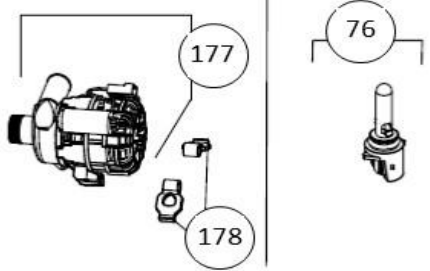
Behuizing



Revisie datum

2-11-2018

vaatwassers - vrijstaand

Typenummer	VWV6023AW - 02	Subgroep onderdeel	Componenten
 <p>Diagram showing a circular component (170) and a long, thin component (171).</p>		 <p>Diagram showing a circular component (511) and a curved component (512).</p>	
 <p>Diagram showing a complex assembly with parts 611, 173, 172, 613, and 614.</p>		 <p>Diagram showing a component (176).</p>	 <p>Diagram showing a motor assembly with parts 177 and 178, and a separate component (76).</p>

Revisie datum

2-11-2018