

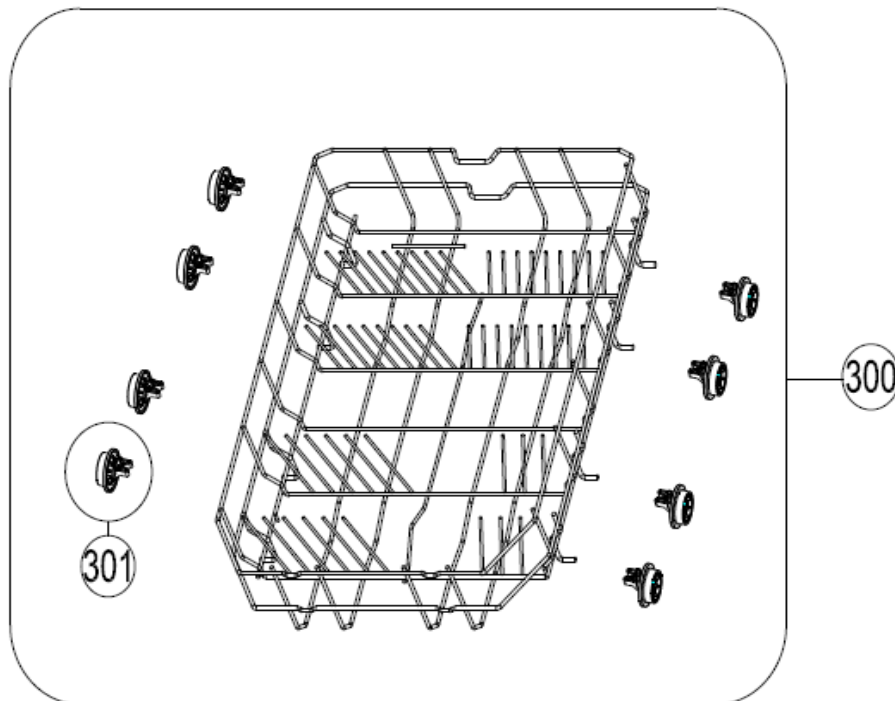
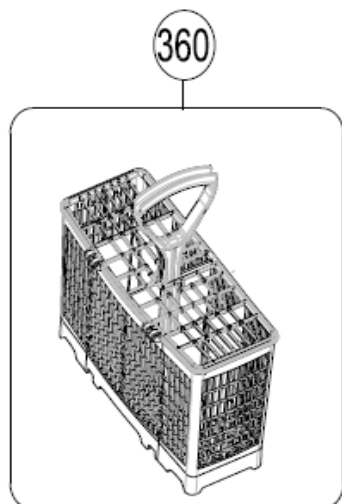
## Vaatwassers

Typenummer

VVW4523AW

Subgroep onderdeel

Servieslade beneden



Revisie datum

1-4-2019

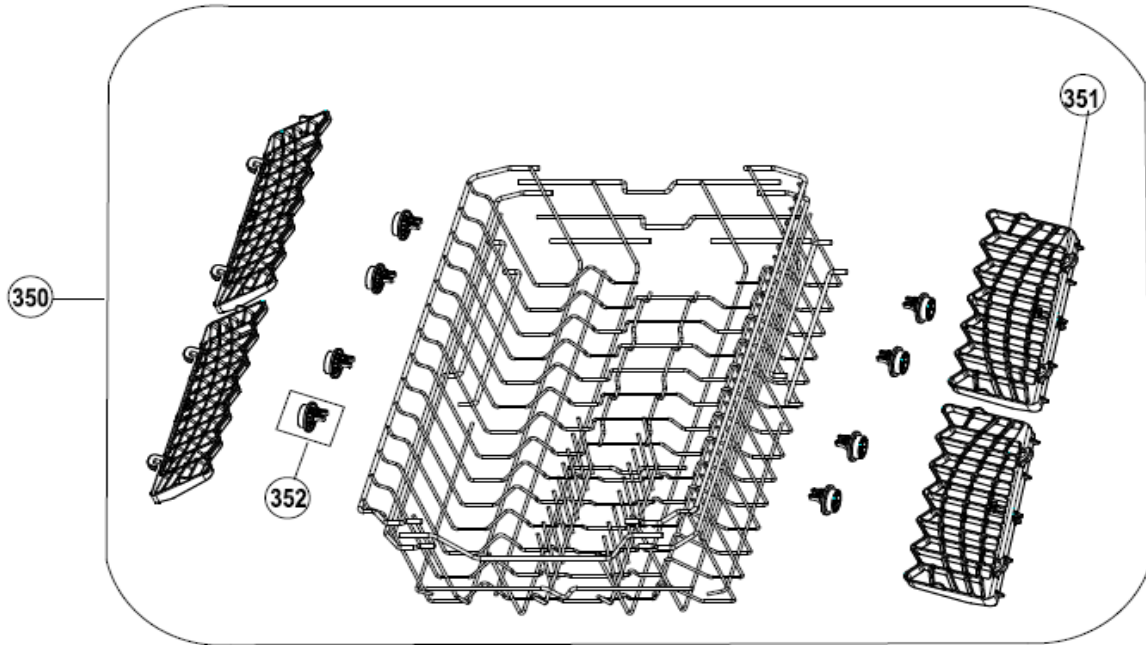
# Vaatwassers

Typenummer

VVW4523AW

Subgroep onderdeel

Servieslade boven



Revisie datum

1-4-2019

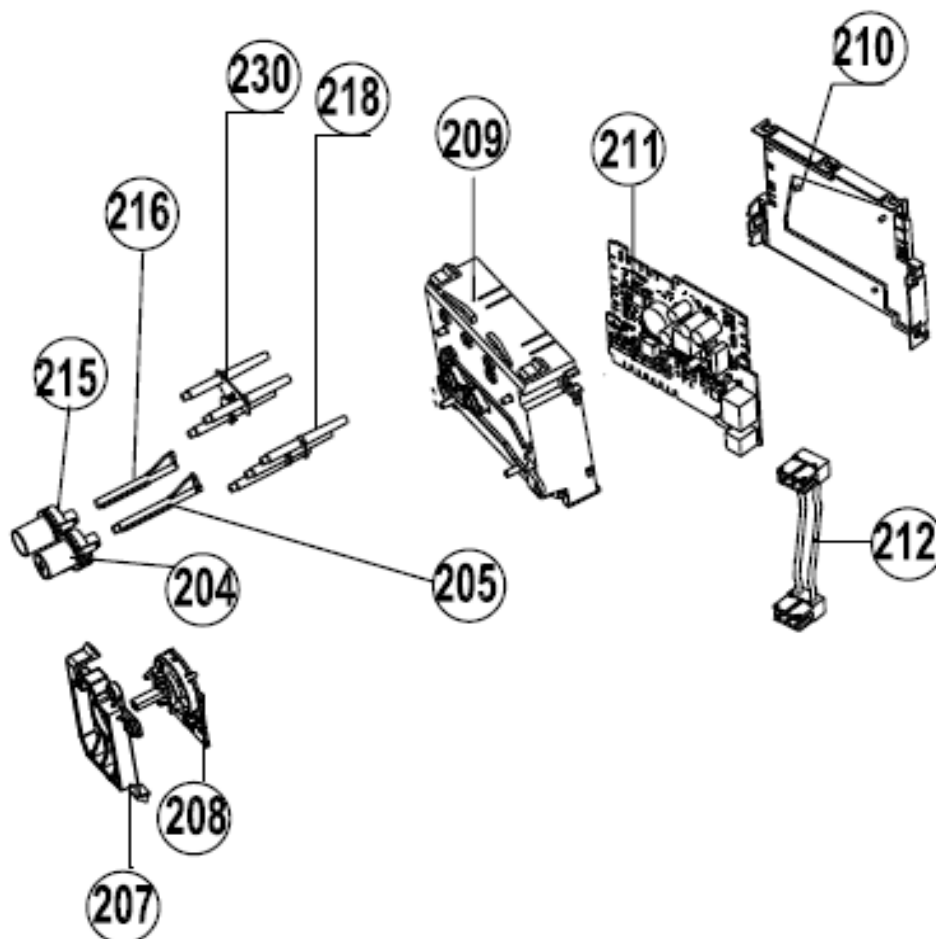
## Vaatwassers

Typenummer

VVW4523AW

Subgroep onderdeel

Bedieningspaneel

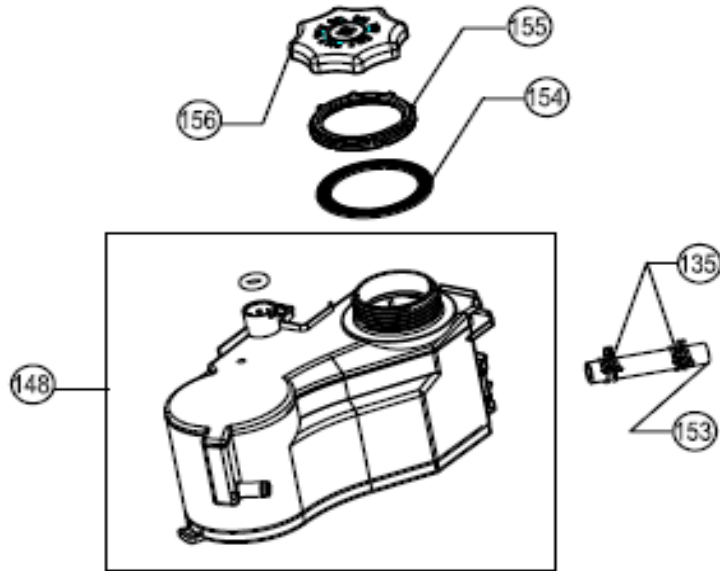


Revisie datum

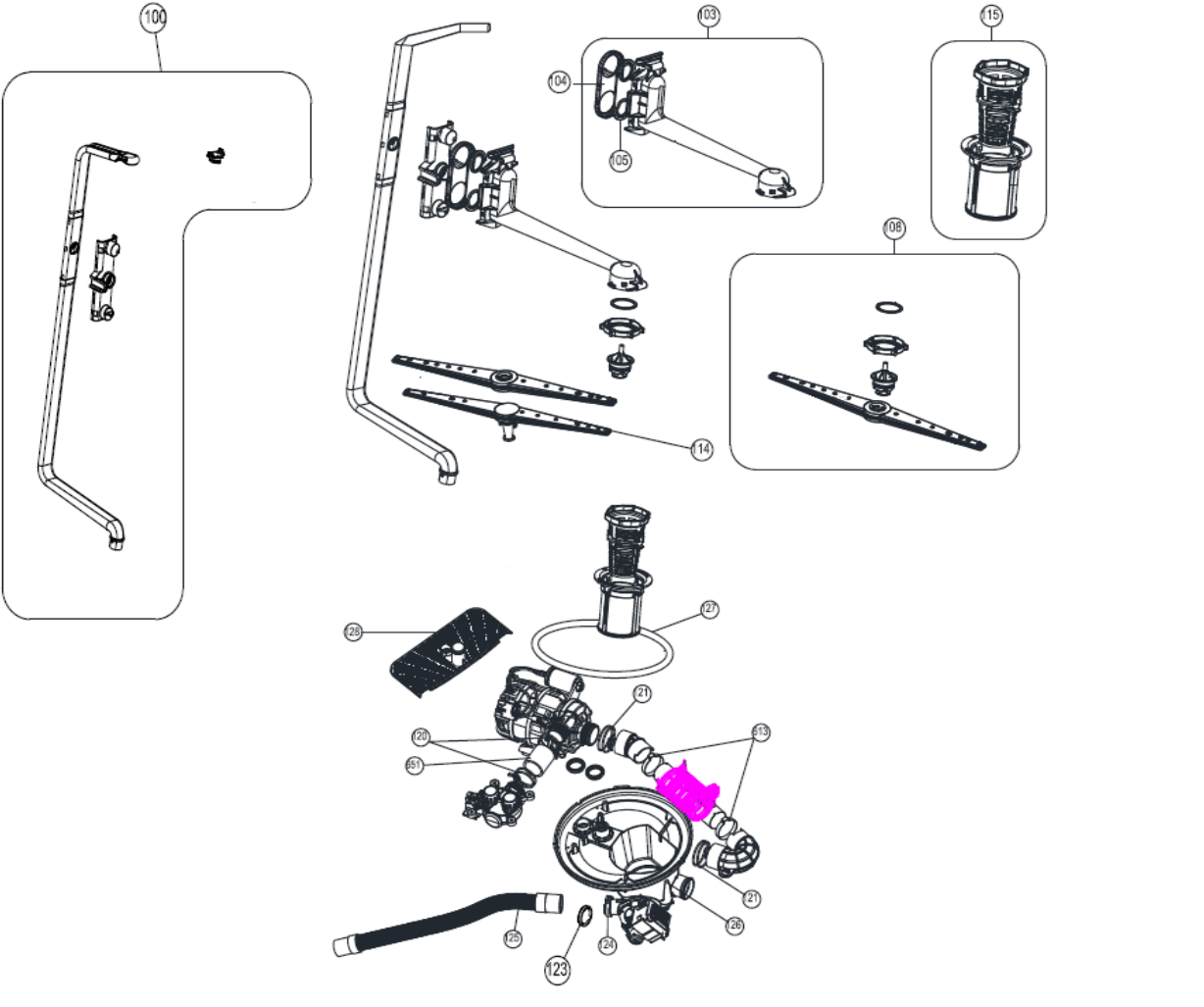
1-4-2019

## Vaatwassers

Typenummer	VVW4523AW	Subgroep onderdeel	Waterontharder
------------	-----------	--------------------	----------------

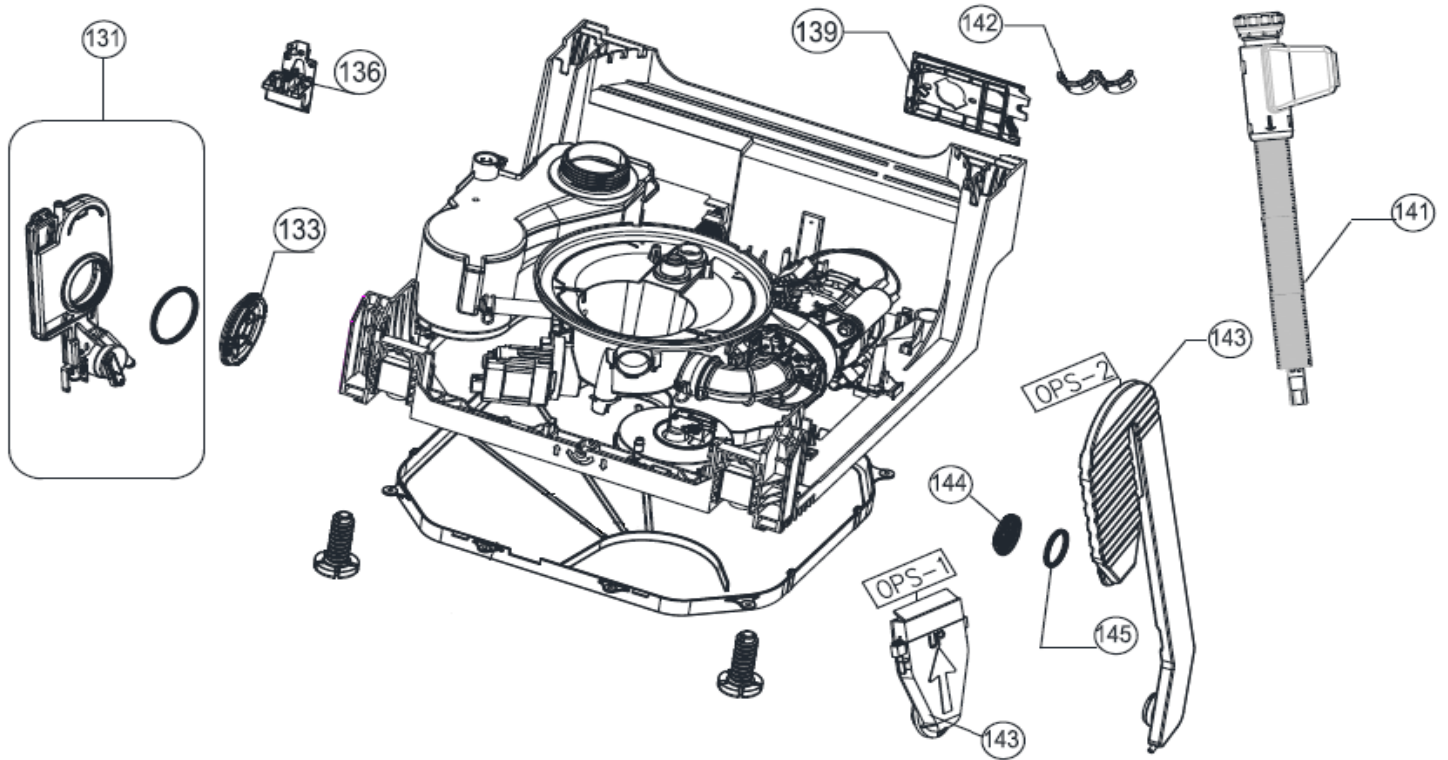


# Vaatwassers

Typenummer	VWV4523AW	Subgroep onderdeel	Hydraulische groep boven
 <p>The diagram shows an exploded view of a dishwasher hydraulic assembly. On the left, a large L-shaped frame is labeled 100. To its right, a hydraulic arm assembly is shown with callouts 103, 104, and 105. Callout 103 is highlighted in pink. Below this, callout 108 shows a detailed view of a component on a spray arm (114). To the right of the arm assembly, callout 115 shows a hydraulic group. At the bottom, a detailed exploded view of the hydraulic group is shown with callouts 120, 121, 123, 124, 125, 126, 129, 130, 131, and 135. Callout 121 is highlighted in pink.</p>			
Revisie datum		1-4-2019	

# Vaatwassers

Typenummer VVW4523AW Subgroep onderdeel Hydraulische groep beneden

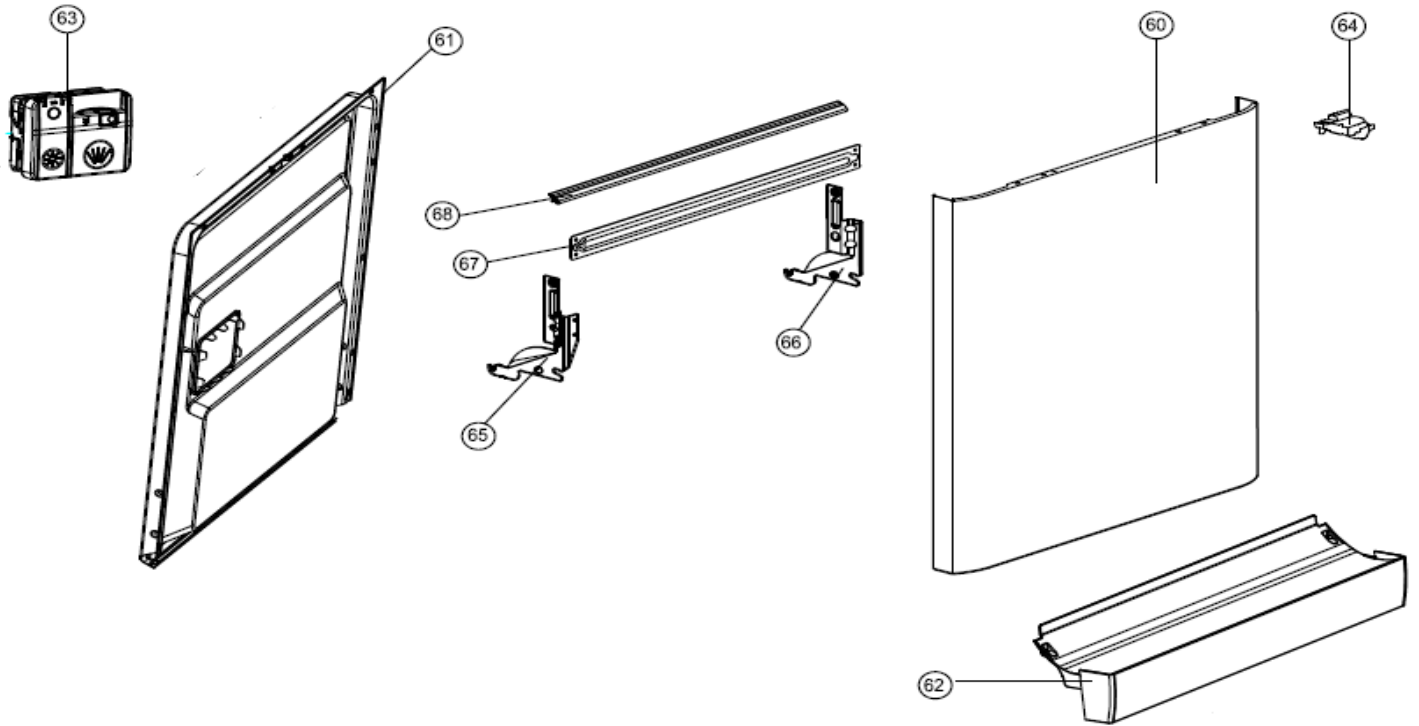


Revisie datum

1-4-2019

# Vaatwassers

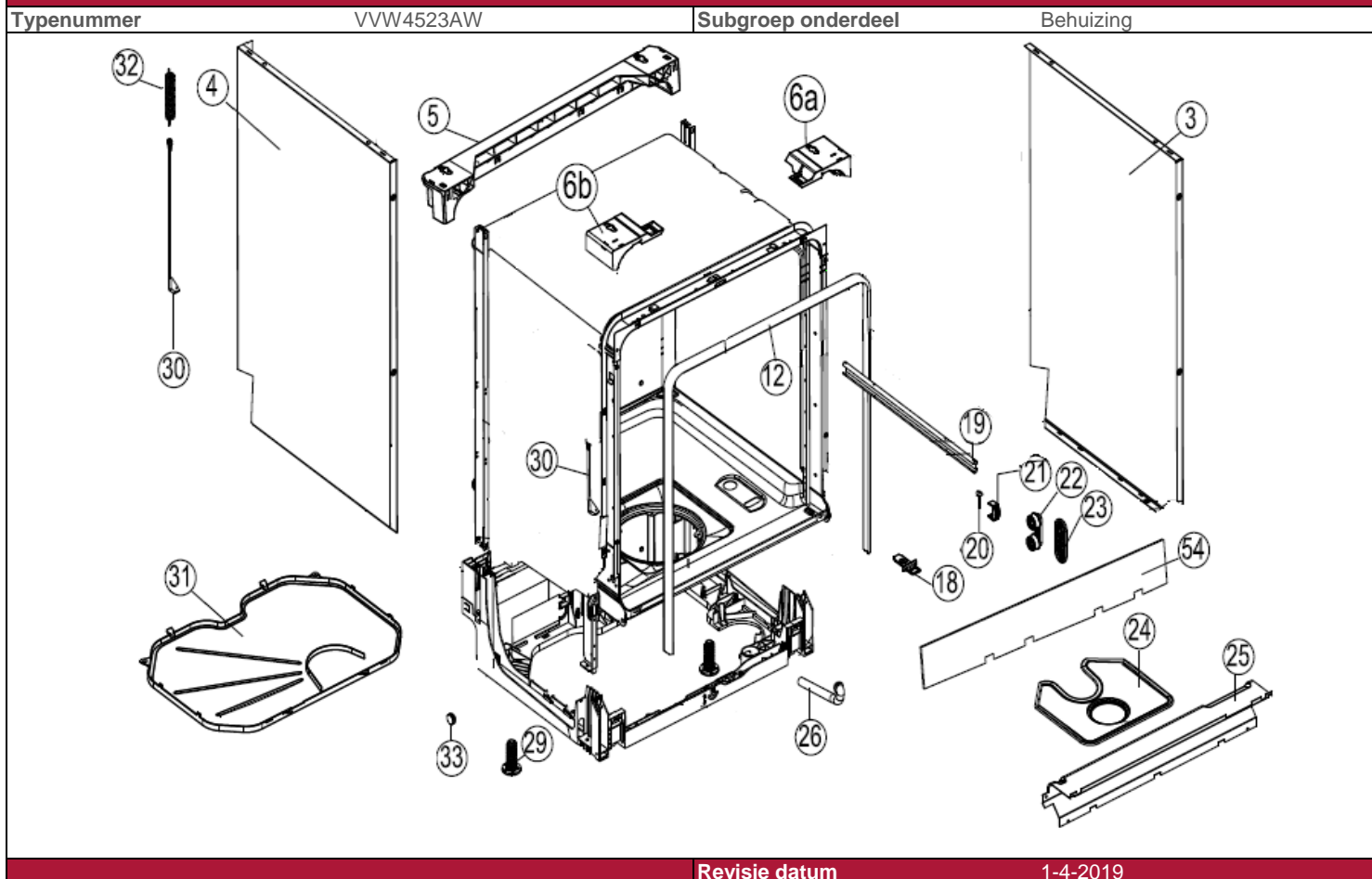
Typenummer	VVW4523AW	Subgroep onderdeel	Deur
------------	-----------	--------------------	------



Revisie datum

1-4-2019

## Vaatwassers





# Vaatwassers

Typenummer	VWV4523AW	Subgroep onderdeel	Componenten
