

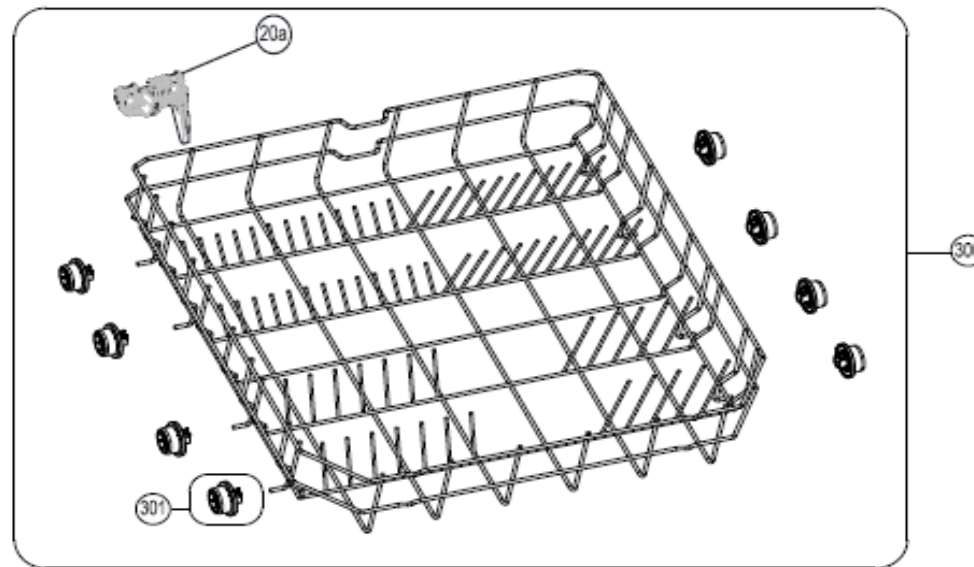
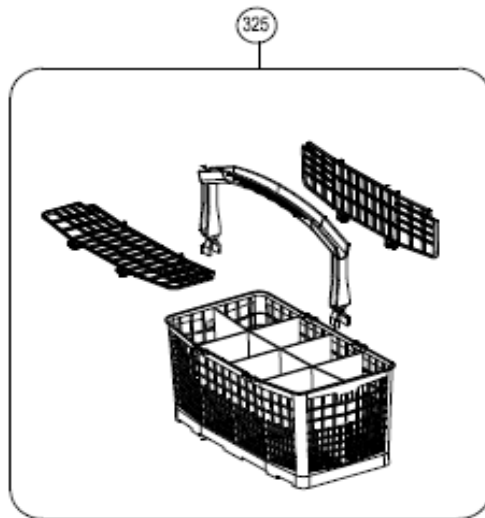
INVENTUM

maakt 't moment

Inbouw Witgoed - Vaatwassers

Typenummer

RVW6027AB/02



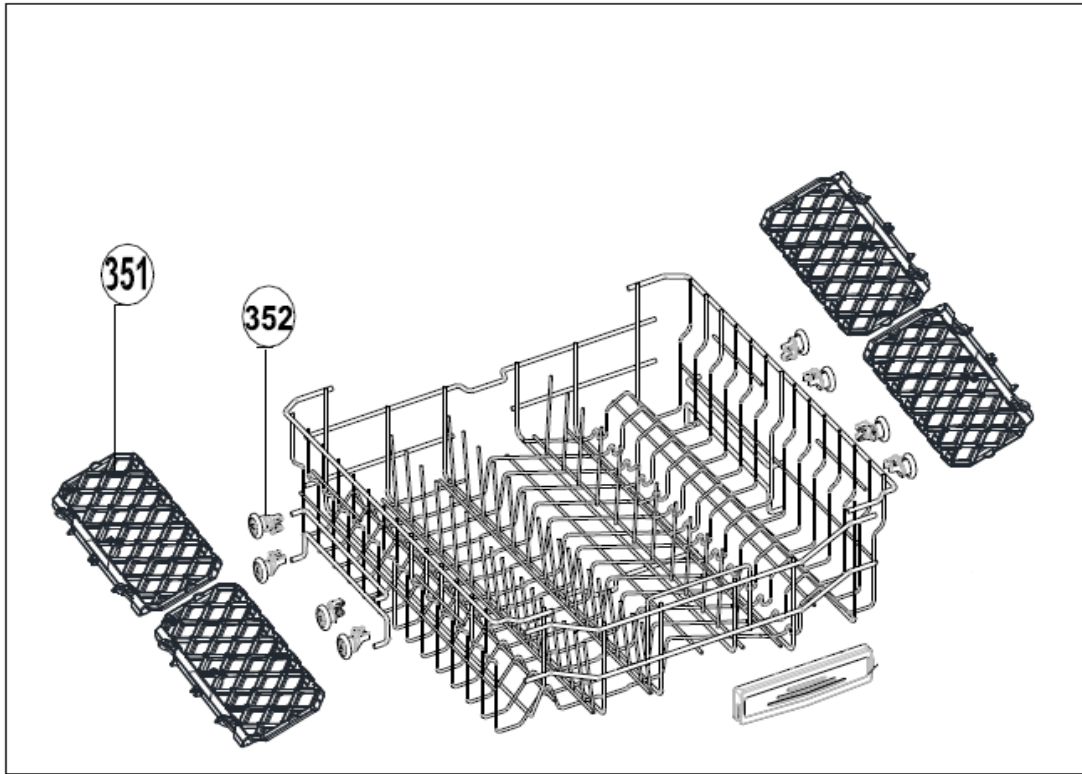
Revisie Datum

9-6-2022

Inbouw Witgoed - Vaatwassers

Typenummer

RVW6027AB/02



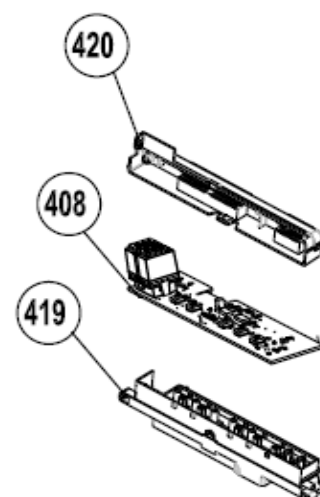
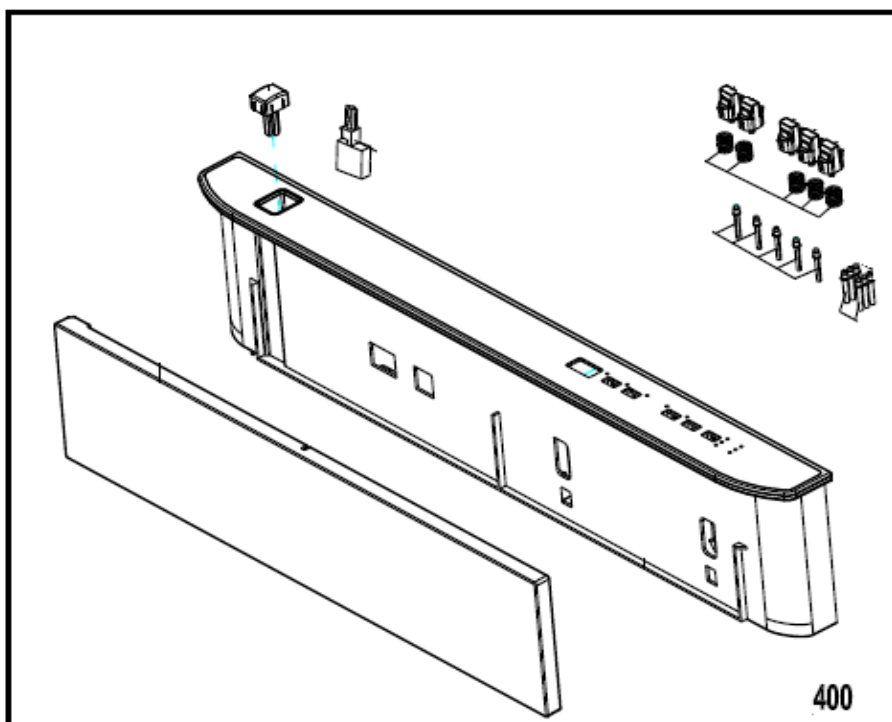
Revisie Datum

9-6-2022

Inbouw Witgoed - Vaatwassers

Typenummer

RVW6027AB/02



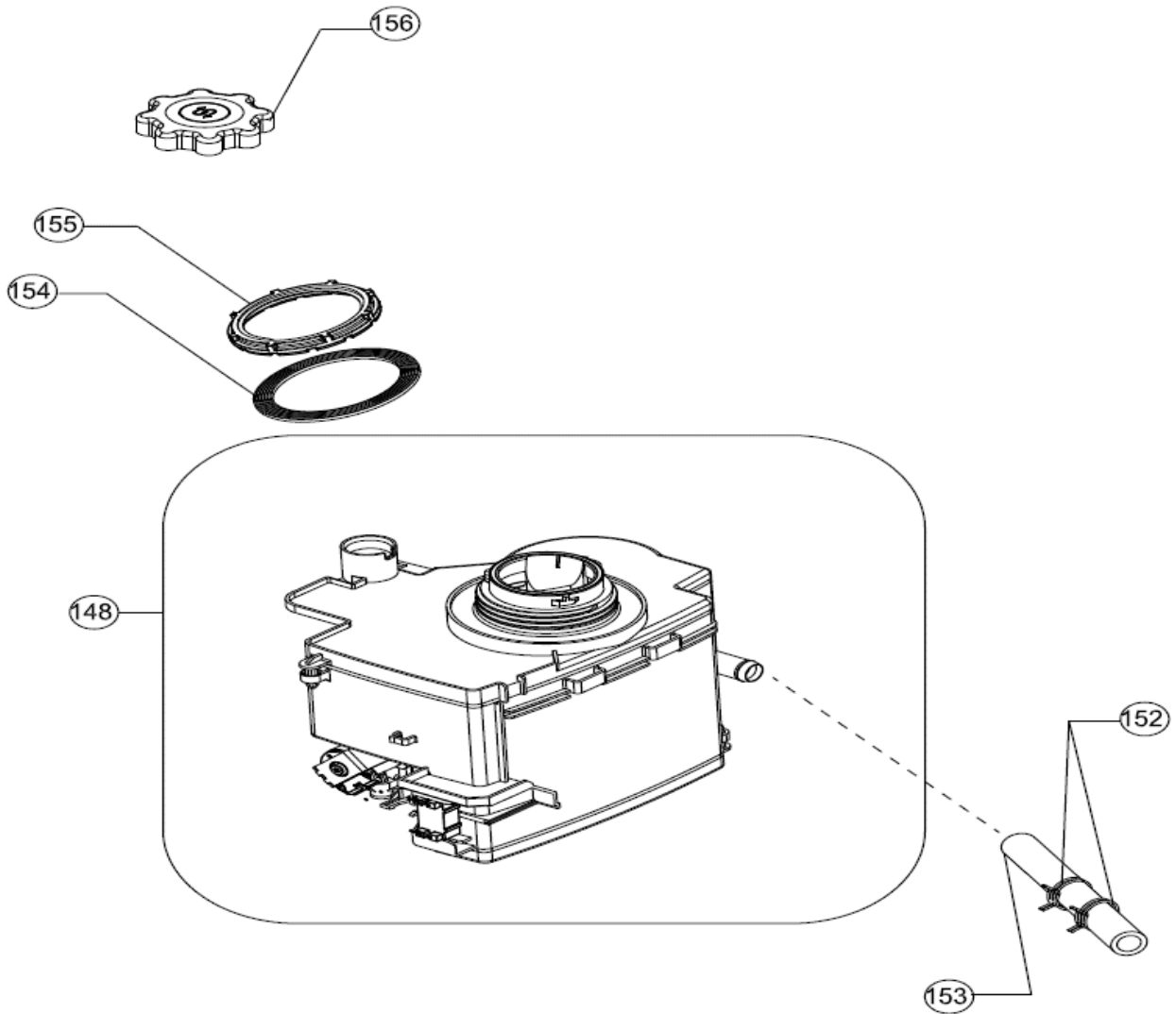
Revisie Datum

9-6-2022

Inbouw Witgoed - Vaatwassers

Typenummer

RVW6027AB/02

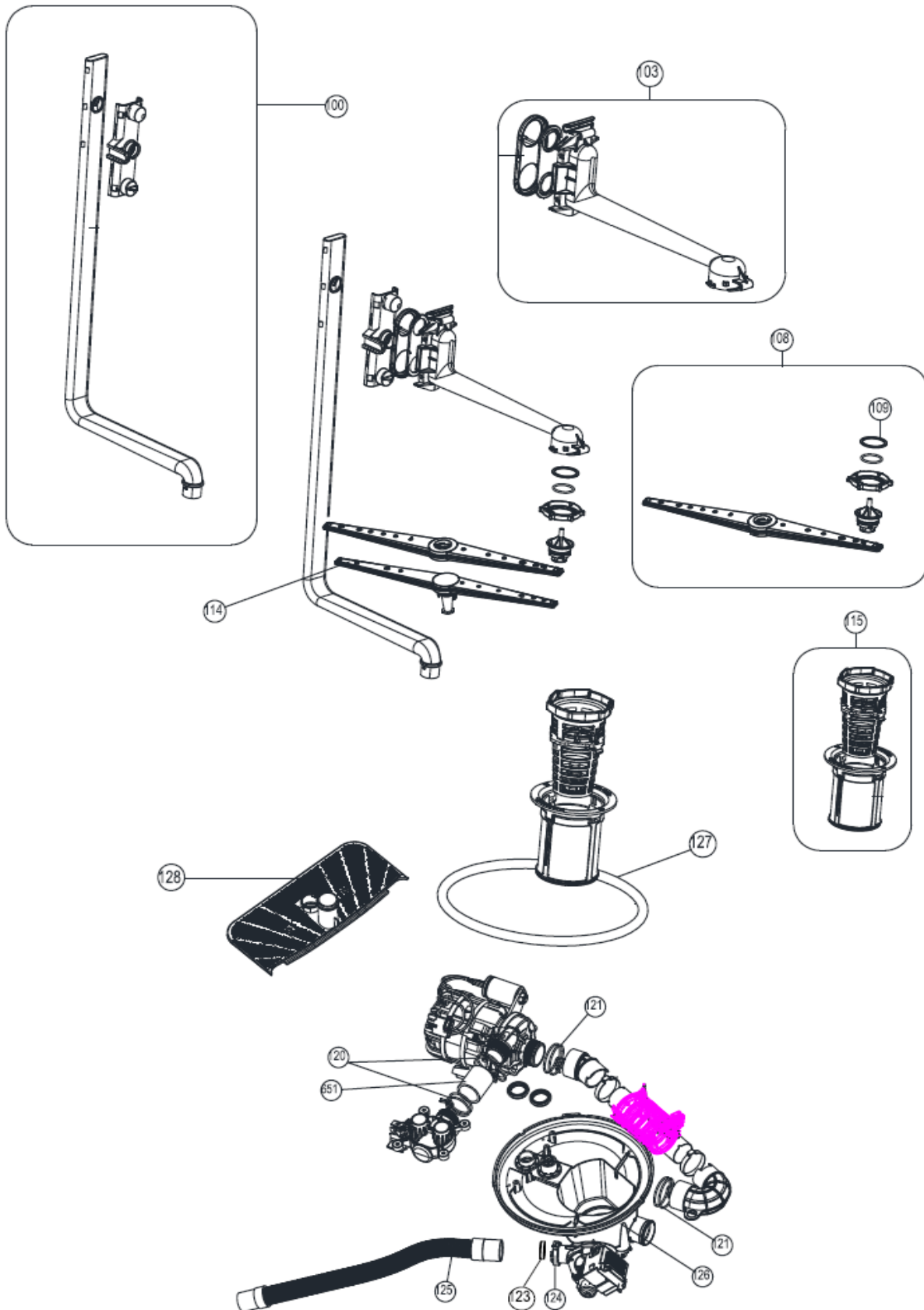


Revisie Datum

9-6-2022

Inbouw Witgoed - Vaatwassers

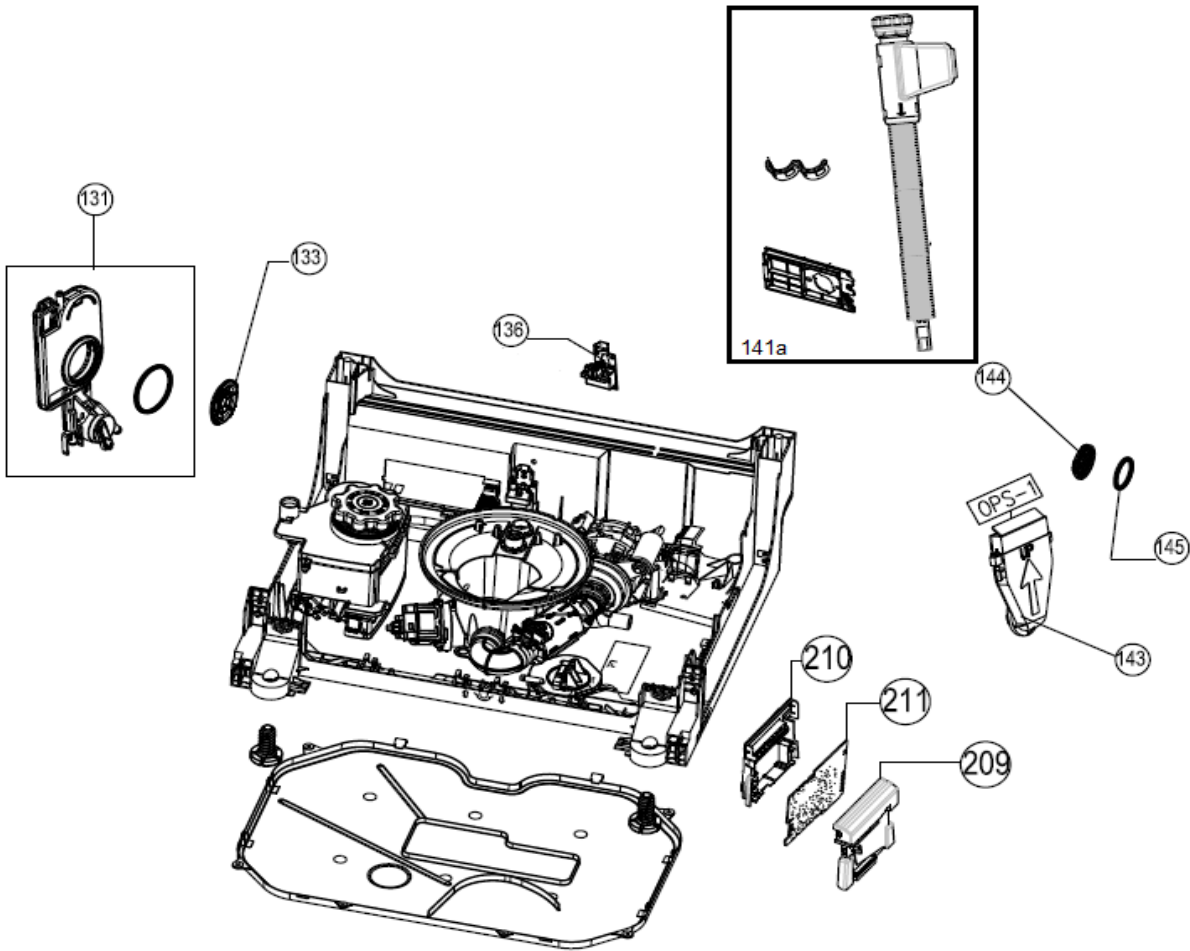
Typenummer RVW6027AB/02



Inbouw Witgoed - Vaatwassers

Typenummer

RVW6027AB/02



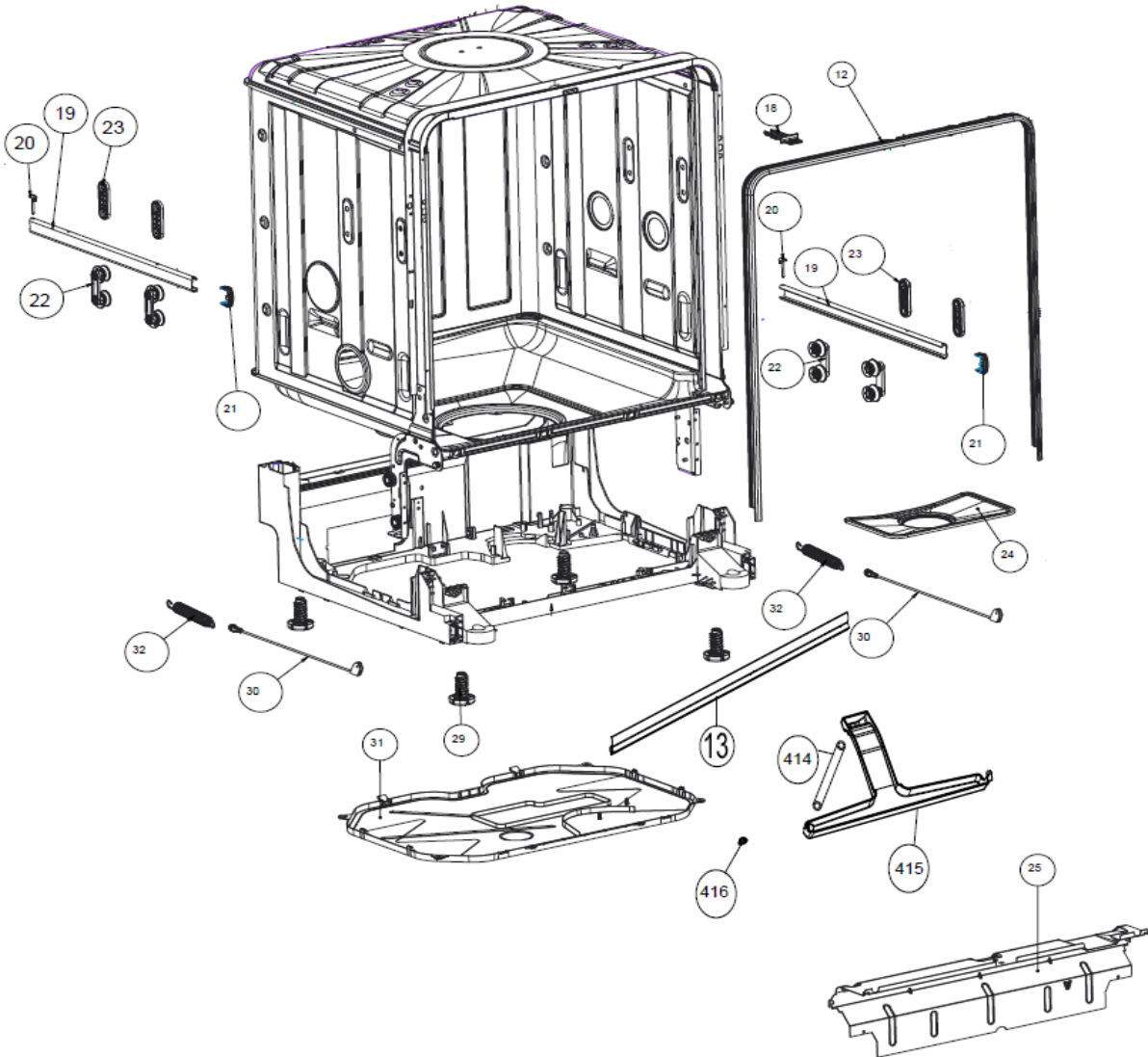
Revisie Datum

9-6-2022

Inbouw Witgoed - Vaatwassers

Typenummer

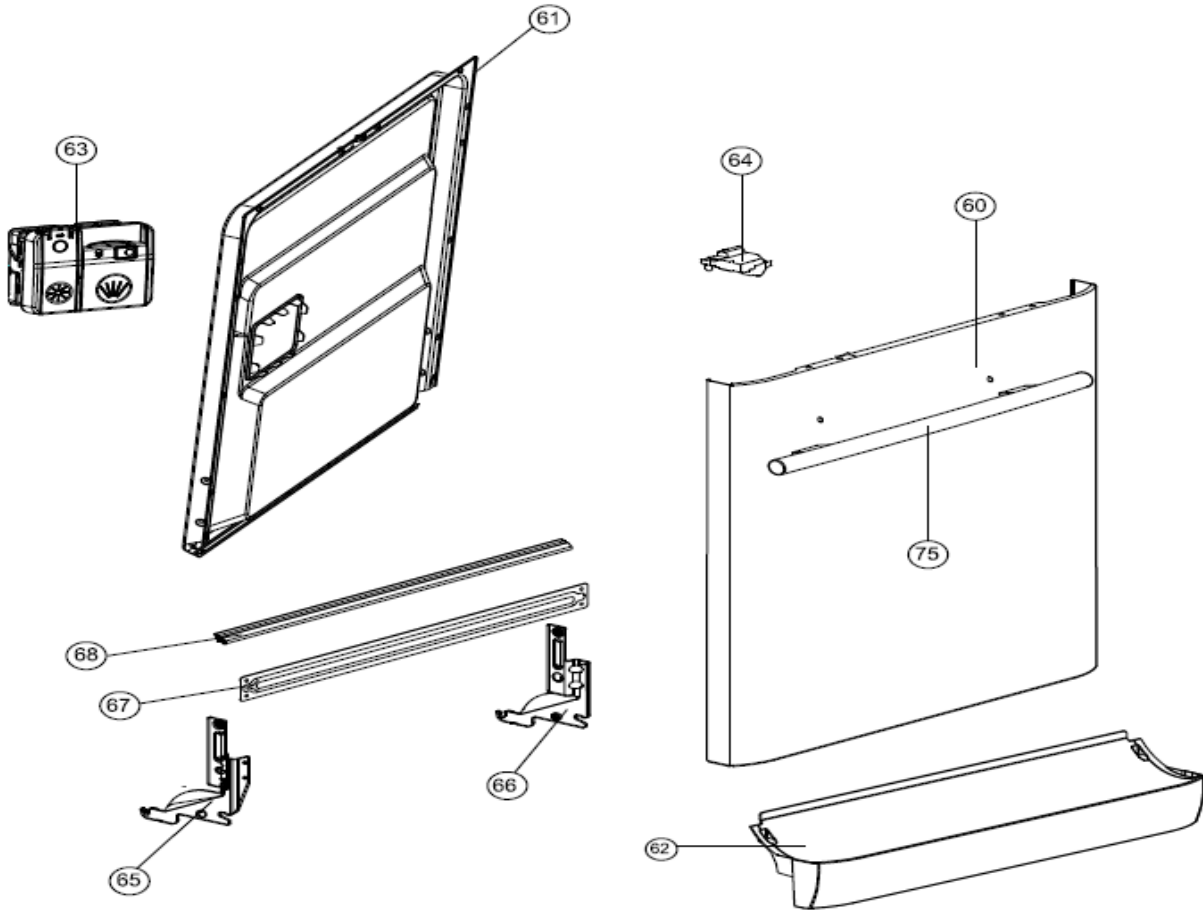
RVW6027AB/02



Inbouw Witgoed - Vaatwassers

Typenummer

RVW6027AB/02



Revisie Datum

9-6-2022

Inbouw Witgoed - Vaatwassers

Typenummer	RVW6027AB/02
<p>The diagram shows the exploded view of a built-in dishwasher assembly. The components are labeled with callout numbers: 611 (left side panel), 173 (main dishwasher unit), 612 (right side panel), 613 (top panel), 197 (water inlet valve), 75 (top panel clips), 76 (front panel), 77 (motor and pump assembly), and 78 (water inlet valve). A pair of scissors is shown near callout 75, indicating where to cut the top panel clips.</p>	
Revisie Datum	9-6-2022