

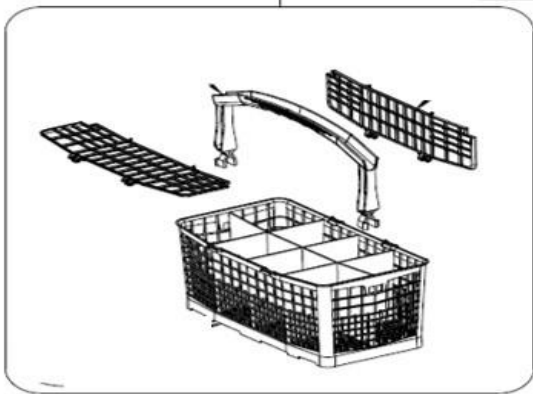
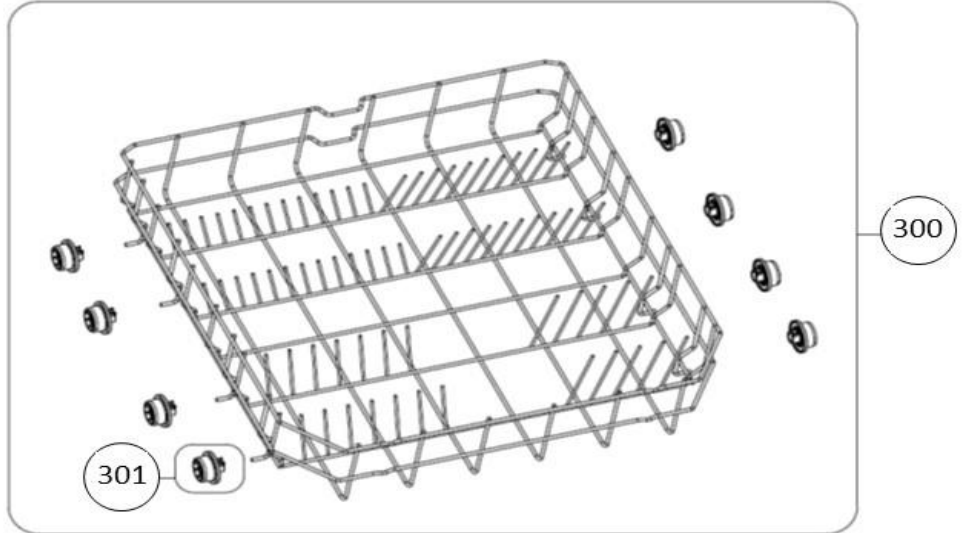
vaatwassers - Inbouw

Typenummer

IVW6008A - 01

Subgroep onderdeel

Servieslade beneden



Revisie datum

23-11-2017

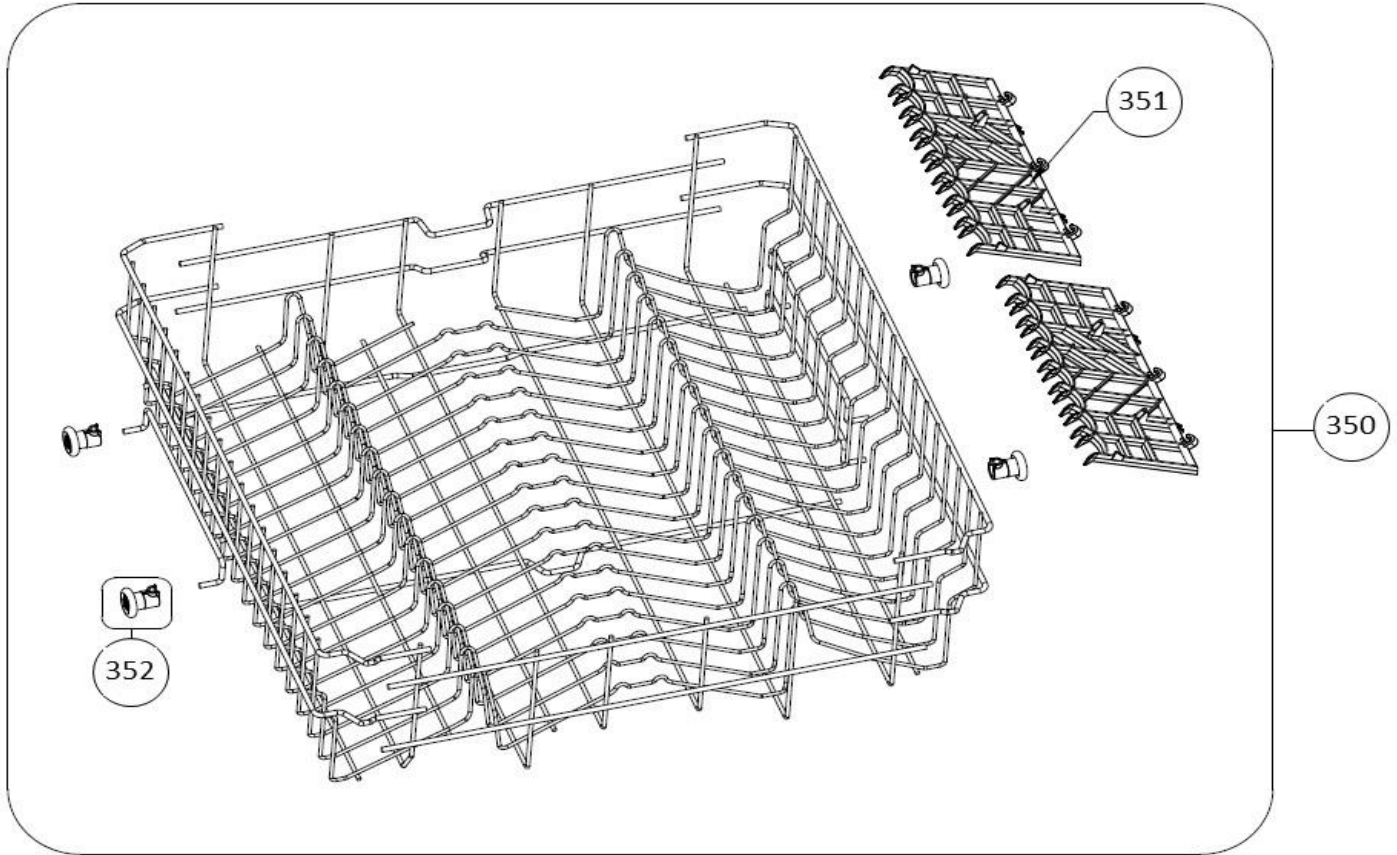
vaatwassers - Inbouw

Typenummer

IVW6008A - 01

Subgroep onderdeel

Servieslade boven



Revisie datum

23-11-2017

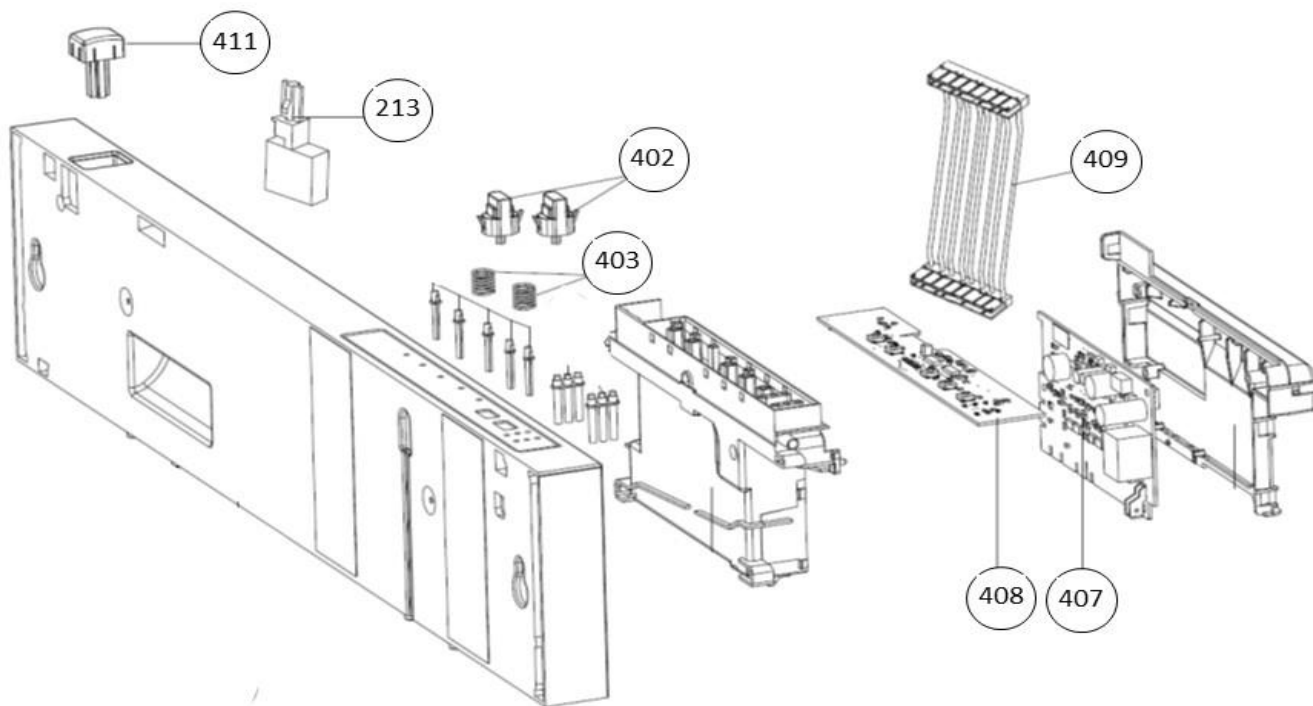
vaatwassers - Inbouw

Typenummer

IVW6008A - 01

Subgroep onderdeel

Bedieningspaneel



Revisie datum

23-11-2017

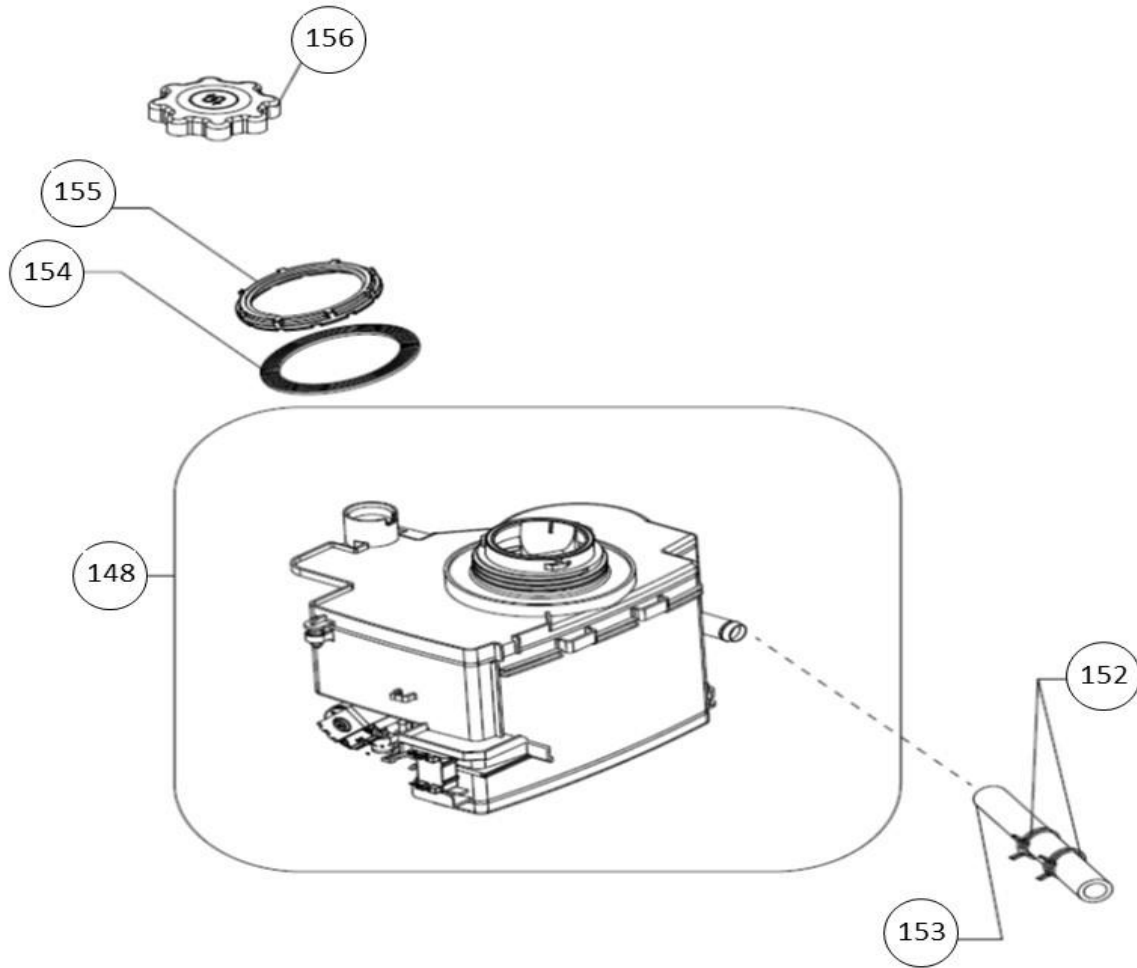
vaatwassers - Inbouw

Typenummer

IVW6008A - 01

Subgroep onderdeel

Waterontharder



Revisie datum

23-11-2017

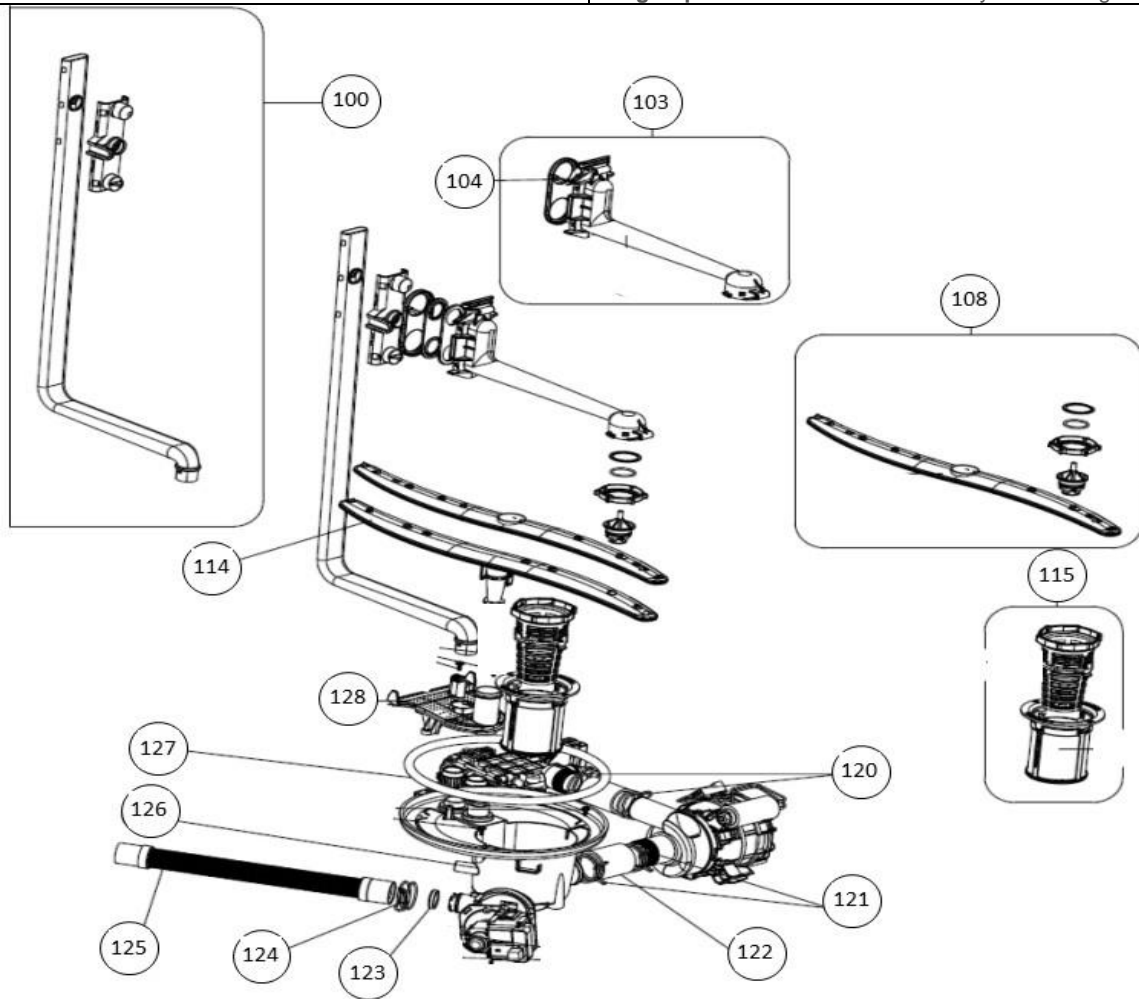
vaatwassers - Inbouw

Typenummer

IVW6008A - 01

Subgroep onderdeel

Hydraulische groep boven



Revisie datum

23-11-2017

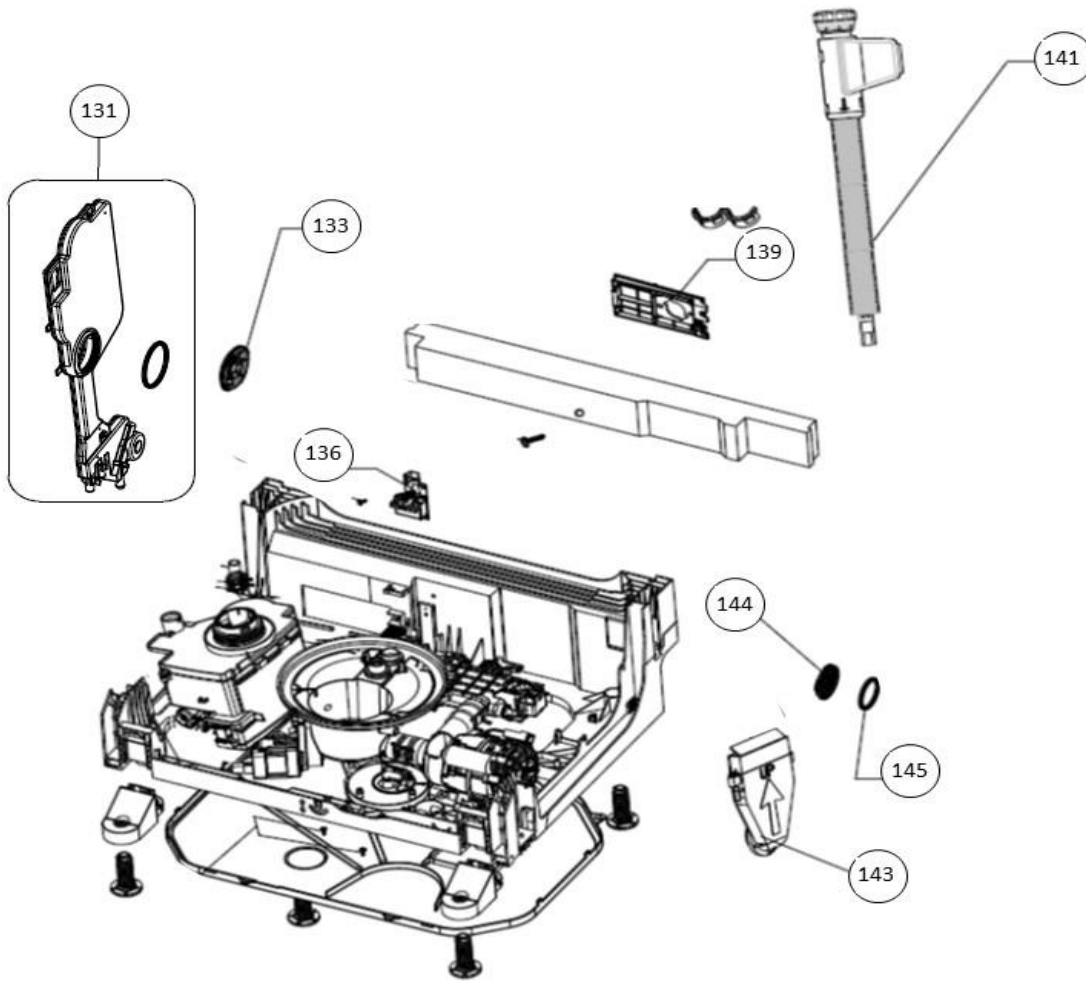
vaatwassers - Inbouw

Typenummer

IVW6008A - 01

Subgroep onderdeel

Hydraulische groep beneden



Revisie datum

23-11-2017

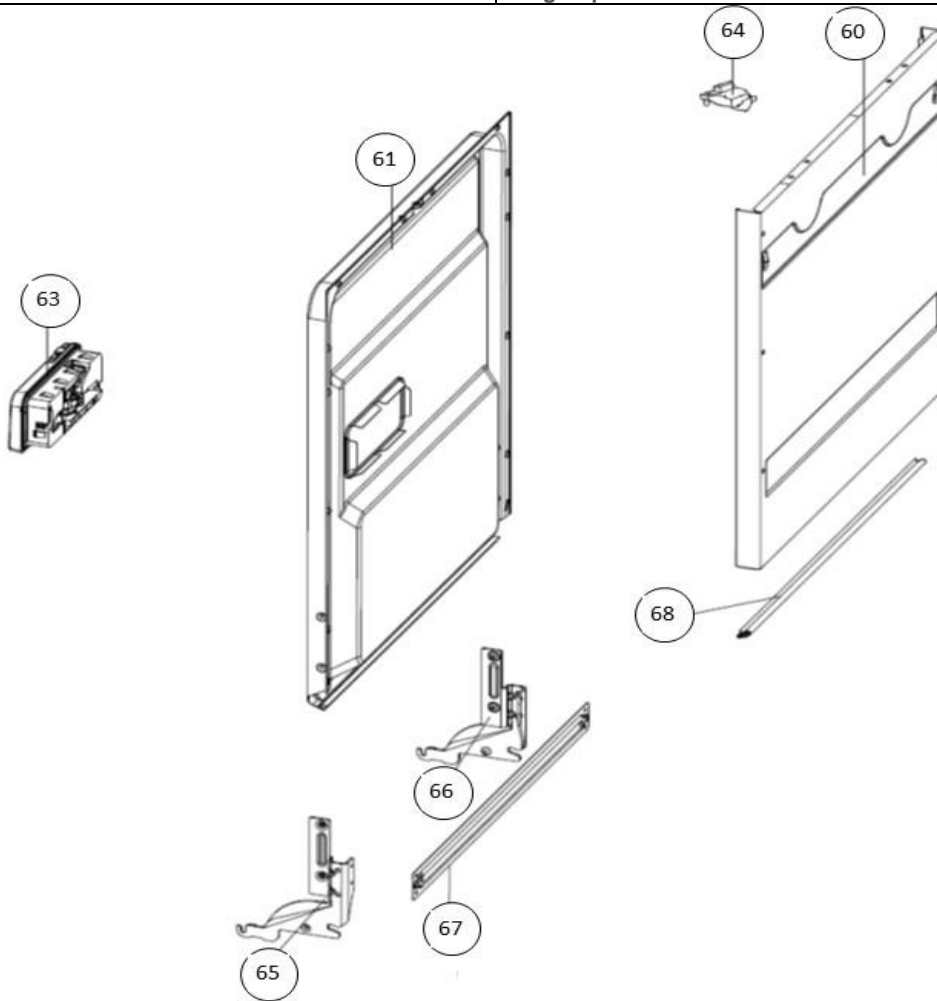
vaatwassers - Inbouw

Typenummer

IVW6008A - 01

Subgroep onderdeel

Deur



Revisie datum

23-11-2017

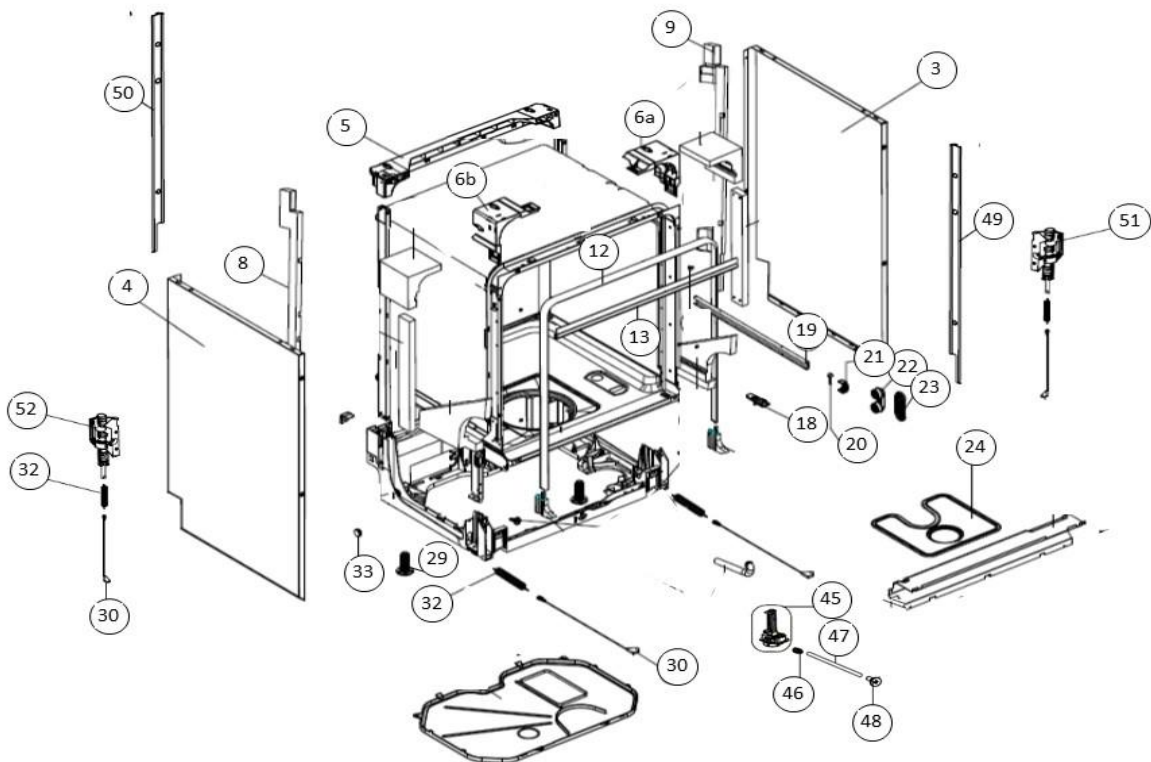
vaatwassers - Inbouw

Typenummer

IVW6008A - 01

Subgroep onderdeel

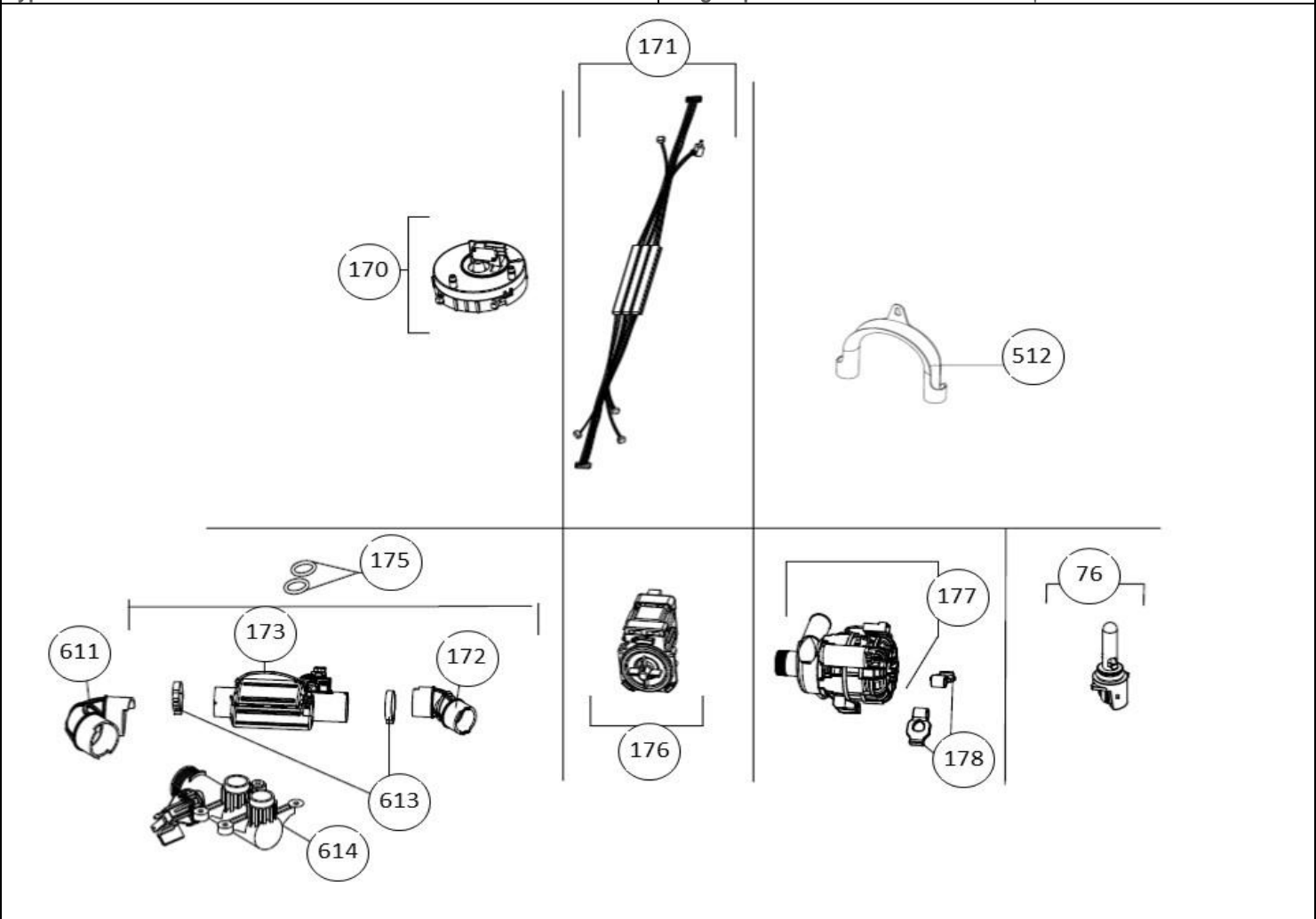
Behuizing



Revisie datum

23-11-2017

vaatwassers - Inbouw

Typenummer	IVW6008A - 01	Subgroep onderdeel	Componenten
 <p>The diagram shows an exploded view of a built-in dishwasher assembly. The components are numbered as follows:</p> <ul style="list-style-type: none">170: A circular base or mounting plate.171: A long, thin, curved component, likely a door hinge or latch.512: A curved metal bracket or support.175: A pair of scissors, indicating a cut line for the diagram.611: A circular component, possibly a door seal or gasket.173: A rectangular component, likely a motor or pump housing.172: A small cylindrical component, possibly a filter or cap.613: A complex assembly of gears and shafts, likely the motor drive mechanism.614: A component of the motor drive assembly.176: A cylindrical component, possibly a filter or cap.177: A complex assembly of gears and shafts, likely the motor drive mechanism.178: A small cylindrical component, possibly a filter or cap.76: A small cylindrical component, possibly a filter or cap.			
Revisie datum		23-11-2017	

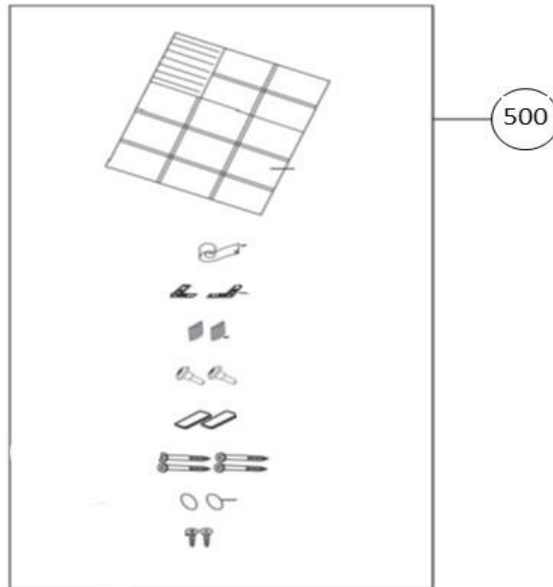
vaatwassers - Inbouw

Typenummer

IVW6008A - 01

Subgroep onderdeel

Assemblage kit



Revisie datum

23-11-2017