

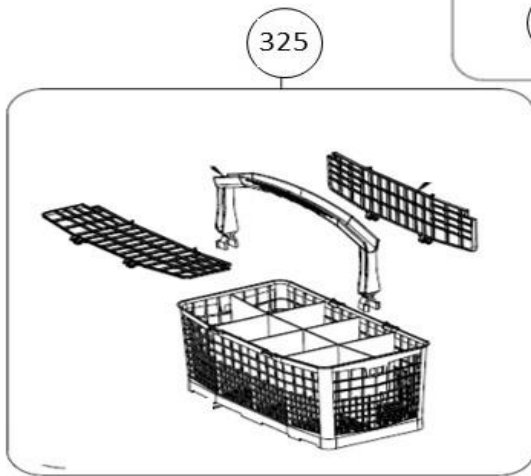
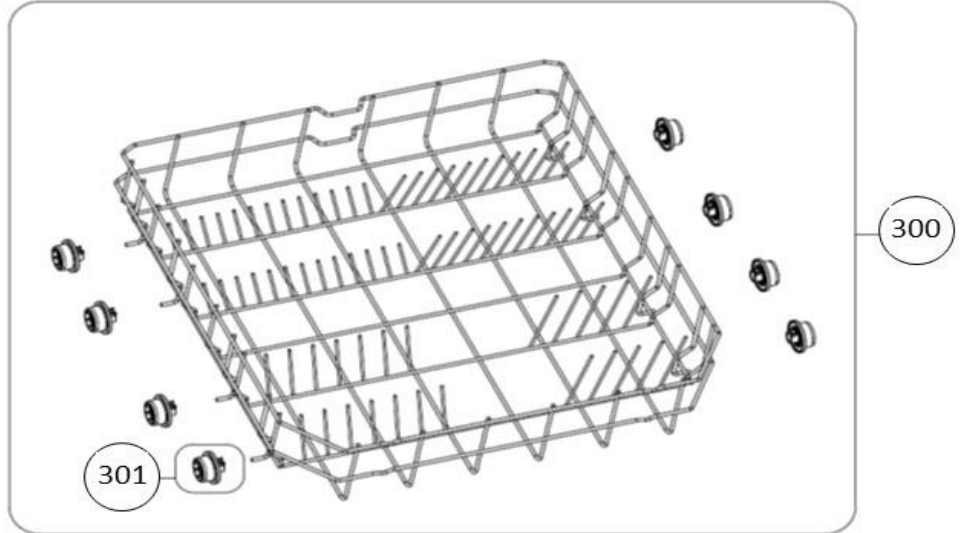
## vaatwassers - vrijstaand

Typenummer

VVW6023AW - 01

Subgroep onderdeel

Servieslade beneden



Revisie datum

23-11-2017

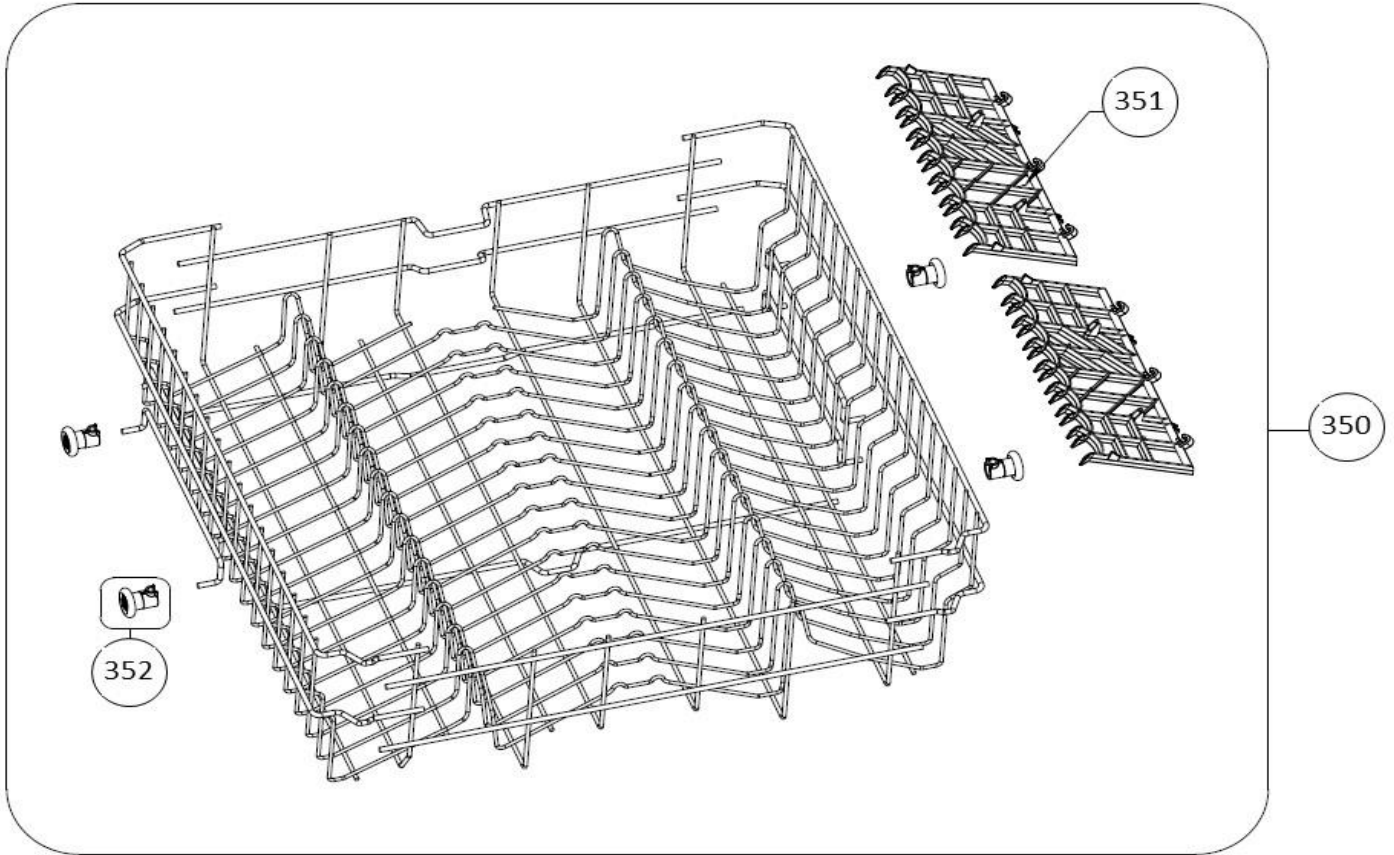
## vaatwassers - vrijstaand

Typenummer

VVW6023AW - 01

Subgroep onderdeel

Servieslade boven



Revisie datum

23-11-2017

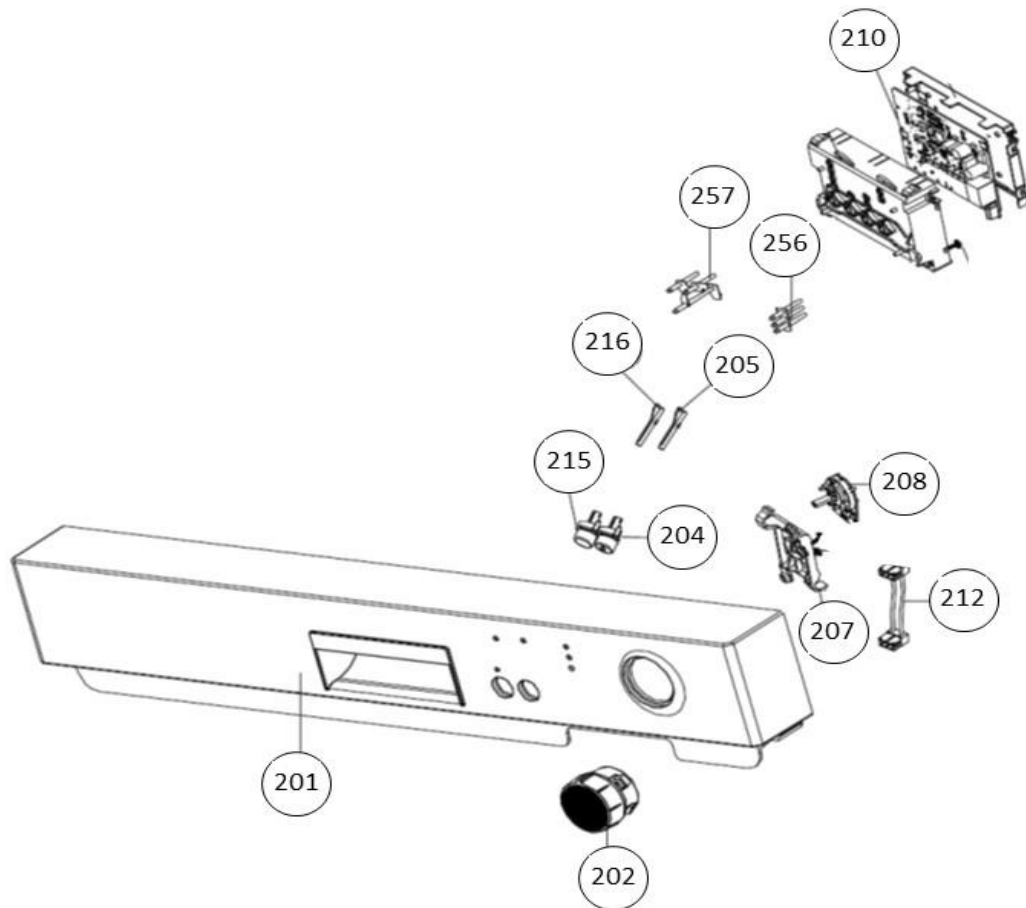
## vaatwassers - vrijstaand

Typenummer

VVW6023AW - 01

Subgroep onderdeel

Bedieningspaneel



Revisie datum

23-11-2017

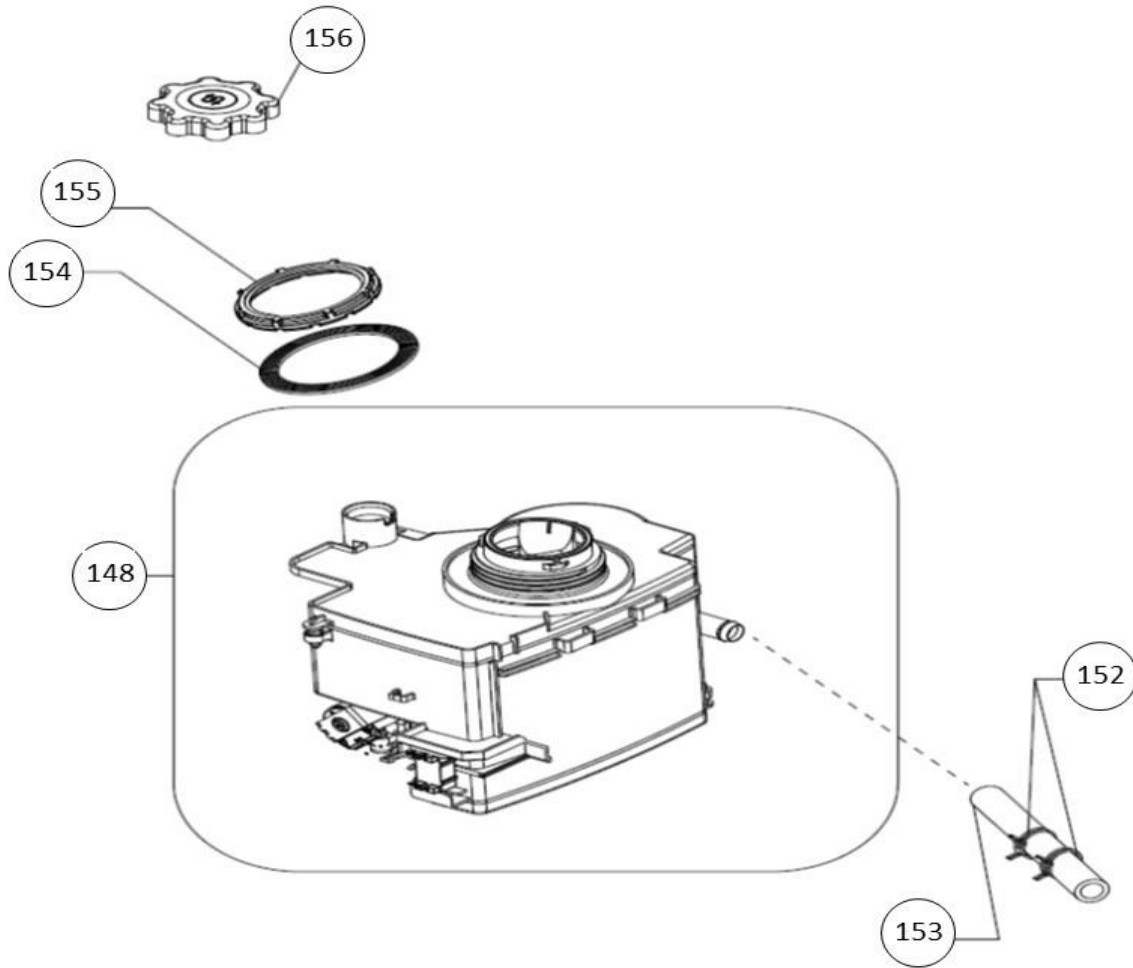
## vaatwassers - vrijstaand

Typenummer

VVW6023AW - 01

Subgroep onderdeel

Waterontharder



Revisie datum

23-11-2017

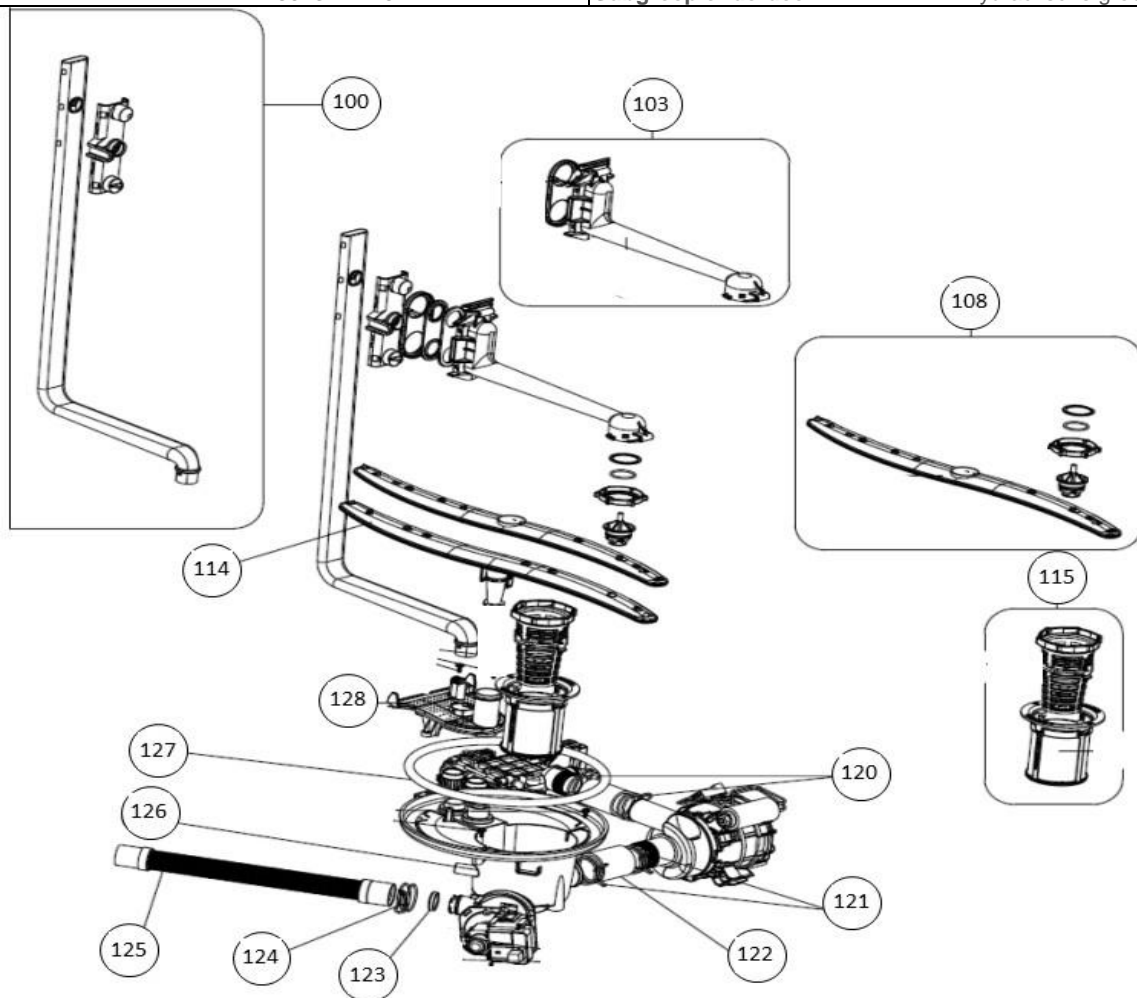
## vaatwassers - vrijstaand

Typenummer

VVW6023AW - 01

Subgroep onderdeel

Hydraulische groep boven



Revisie datum

23-11-2017

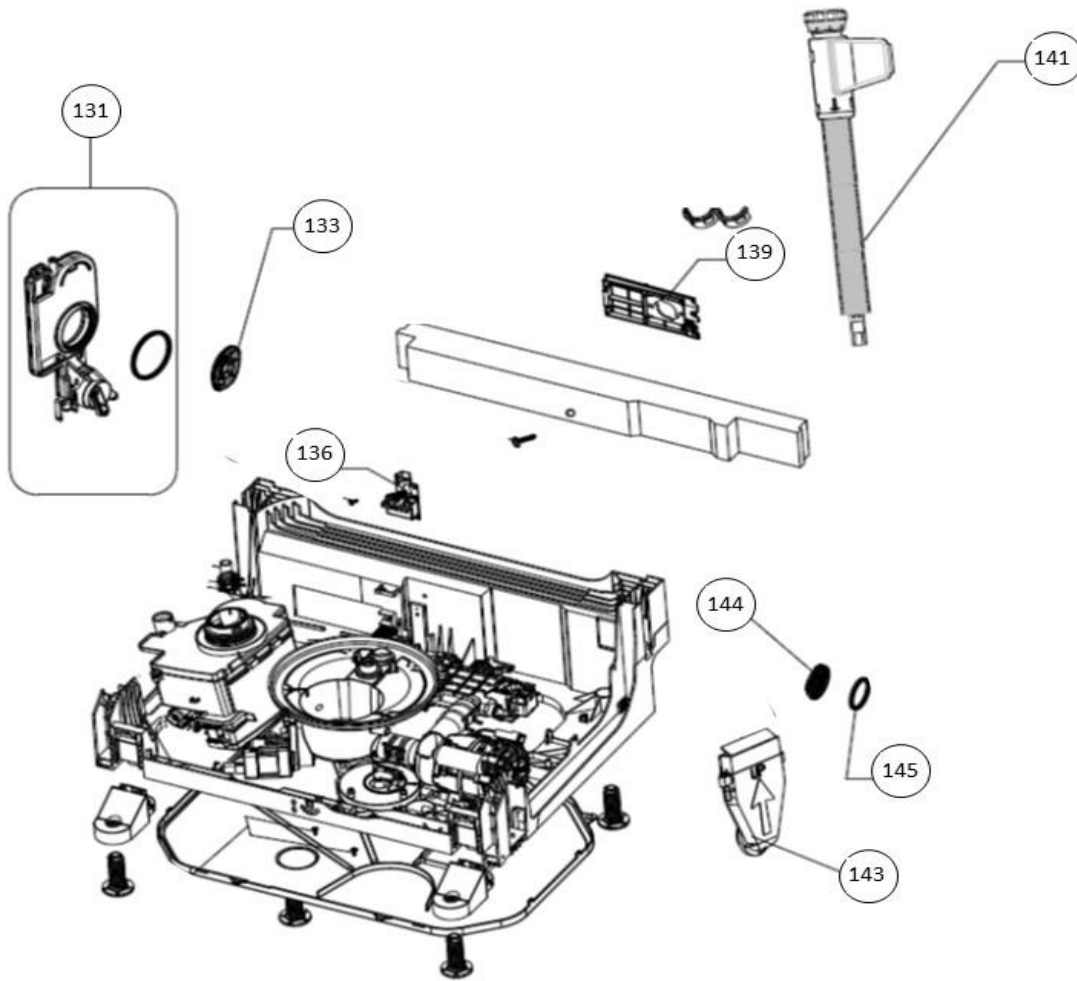
## vaatwassers - vrijstaand

Typenummer

VVW6023AW - 01

Subgroep onderdeel

Hydraulische groep beneden



Revisie datum

23-11-2017

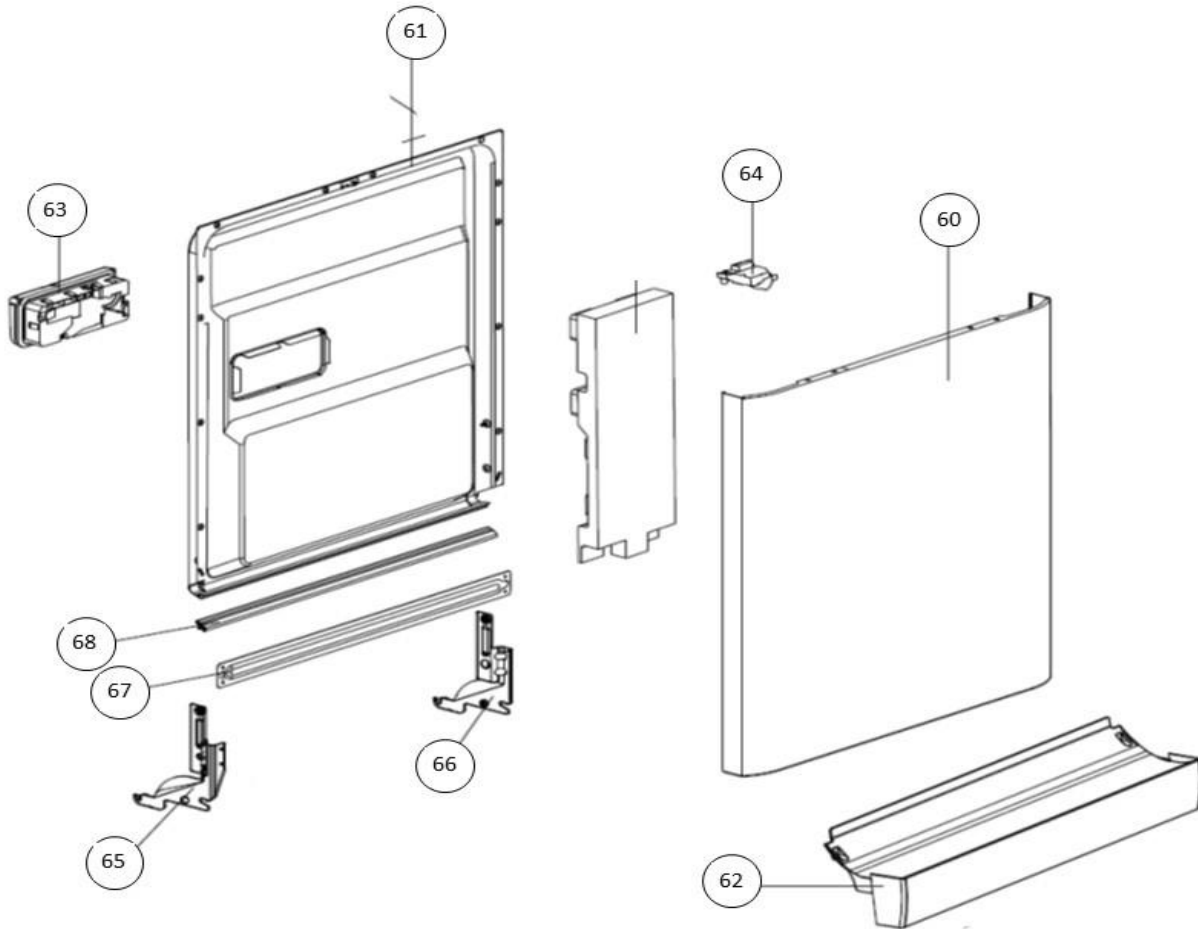
## vaatwassers - vrijstaand

Typenummer

VVW6023AW - 01

Subgroep onderdeel

Deur



Revisie datum

23-11-2017

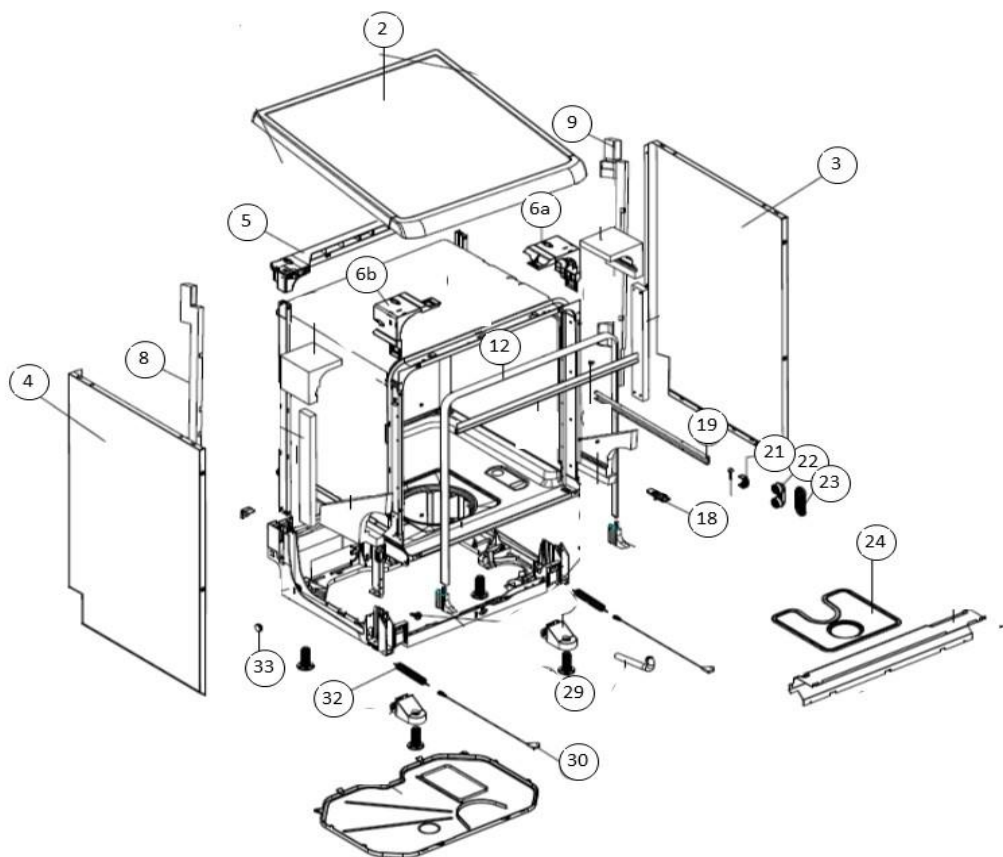
## vaatwassers - vrijstaand

Typenummer

VVW6023AW - 01

Subgroep onderdeel

Behuizing

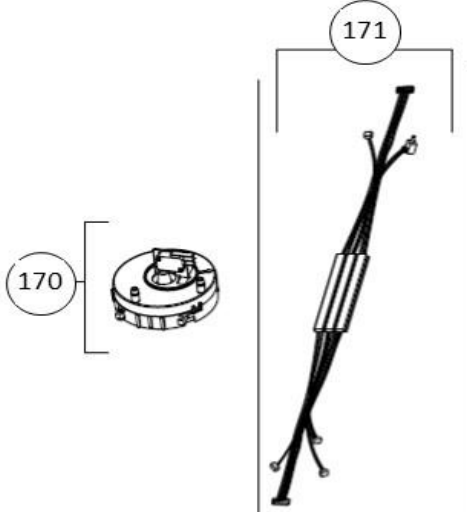
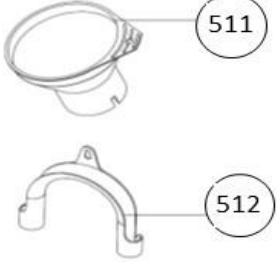
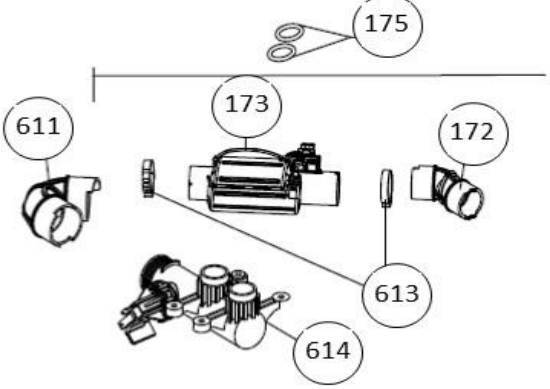
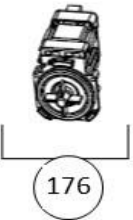
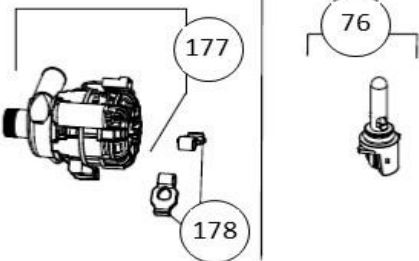


Revisie datum

23-11-2017



## vaatwassers - vrijstaand

Typenummer	VWV6023AW - 01	Subgroep onderdeel	Componenten
 <p>Diagram showing components 170 and 171. Component 170 is a circular base with a central opening. Component 171 is a long, thin, multi-pronged arm.</p>		 <p>Diagram showing components 511 and 512. Component 511 is a circular component with a rim. Component 512 is a curved component with a hook-like end.</p>	
 <p>Diagram showing components 611, 173, 172, 613, and 614. Component 611 is a circular component with a rim. Component 173 is a central component with a handle. Component 172 is a small cylindrical component. Component 613 is a small cylindrical component. Component 614 is a complex assembly of parts.</p>		 <p>Diagram showing component 176, a small cylindrical component with a handle.</p>	 <p>Diagram showing components 177, 178, and 76. Component 177 is a complex assembly of parts. Component 178 is a small cylindrical component. Component 76 is a small cylindrical component with a handle.</p>

Revisie datum

23-11-2017